

DEAL POST TEST 2019-20 - SCHOOL REPORT CARD

PONDY
DIS Z4

34020201301 **GPS EMBALAM**

All Grades represent the following scorings in % *

GRADE A - >75	
GRADE B - 51 TO 75	* School Status Grade
GRADE C - 26 TO 50	represents the total
GRADE D - 10 TO 25	enrollment of the
GRADE E - <10	school (Not %)

Note: The Values given in the brackets denote the difference between the Pre and Post Test Scores.
(For Example: If the Pre-Test Grade is 'C' and the Post-Test Grade is 'A', then the progress is +2)

SCHOOL GRADE - AB

Status Gr. A (0)	Performance Gr. B (0)
------------------	-----------------------

OVERALL PERFORMANCE GRADES

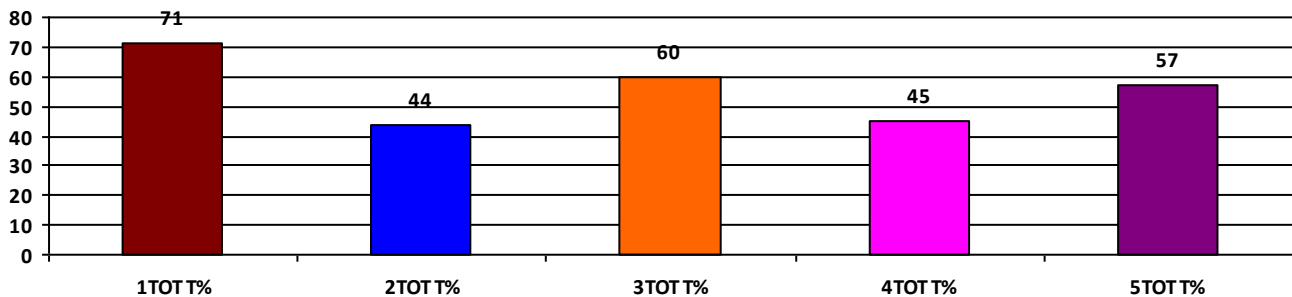
	Boys	Girls	Total
SCHOOL GR.	B	B	B
Diff. to Pre-Test	(+1)	(0)	(0)
DIST. GR.	B	B	B
STATE GR.	B	B	B

CLASSWISE APPEARED

DETAILS	I STD	II STD	III STD	IV STD	V STD
BOYS	20	15	19	18	19
GIRLS	13	13	21	18	30
TOTAL	33	28	40	36	49
Diff. to Pre-Test	(0)	(+1)	(+2)	(+4)	(0)

CLASSWISE PERFORMANCE GRADES (% of marks)

DETAILS	I STD	II STD	III STD	IV STD	V STD
%	71	44	60	45	57
SCHOOL GR.	B	C	B	C	B
Diff. to Pre-Test	(-1)	(0)	(+1)	(0)	(0)
DIST. GR.	A	B	B	B	B
STATE GR.	A	B	B	B	B



GRADEWISE PERFORMANCE (NO. OF STUDENTS)

ENGLISH	1 Std	2 Std	3 Std	4 Std	5 Std	TAMIL	1 Std	2 Std	3 Std	4 Std	5 Std
GR. A	15	0	5	0	9	GR. A	15	8	19	12	12
GR. B	8	3	12	4	19	GR. B	11	8	15	14	26
GR. C	10	17	17	11	11	GR. C	7	7	4	5	6
GR. D	0	5	3	17	9	GR. D	0	4	1	3	5
GR. E	0	3	3	4	1	GR. E	0	1	1	2	0

DEAL POST TEST 2019-20 - SCHOOL REPORT CARD

PONDY
DIS Z4

34020201307 GPS NATHAMEDU

All Grades represent the following scorings in % *

GRADE A - >75	* School Status Grade represents the total enrollment of the school (Not %)
GRADE B - 51 TO 75	
GRADE C - 26 TO 50	
GRADE D - 10 TO 25	
GRADE E - <10	

Note: The Values given in the brackets denote the difference between the Pre and Post Test Scores.
(For Example: If the Pre-Test Grade is 'C' and the Post-Test Grade is 'A', then the progress is +2)

SCHOOL GRADE - BB

Status Gr. B (0) Performance Gr. B(+1)

OVERALL PERFORMANCE GRADES

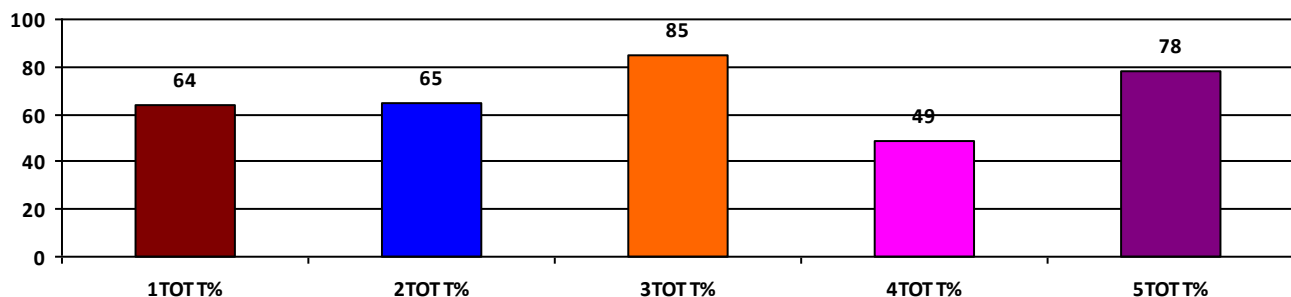
	Boys	Girls	Total
SCHOOL GR.	B	B	B
Diff. to Pre-Test	(+1)	(0)	(+1)
DIST. GR.	B	B	B
STATE GR.	B	B	B

CLASSWISE APPEARED

DETAILS	I STD	II STD	III STD	IV STD	V STD
BOYS	7	6	8	8	5
GIRLS	3	6	3	5	3
TOTAL	10	12	11	13	8
Diff. to Pre-Test	(+1)	(0)	(-1)	(+1)	(0)

CLASSWISE PERFORMANCE GRADES (% of marks)

DETAILS	I STD	II STD	III STD	IV STD	V STD
%	64	65	85	49	78
SCHOOL GR.	B	B	A	C	A
Diff. to Pre-Test	(0)	(+1)	(+2)	(0)	(+2)
DIST. GR.	A	B	B	B	B
STATE GR.	A	B	B	B	B



GRADEWISE PERFORMANCE (NO. OF STUDENTS)

ENGLISH	1 Std	2 Std	3 Std	4 Std	5 Std	TAMIL	1 Std	2 Std	3 Std	4 Std	5 Std
GR. A	0	6	10	0	8	GR. A	8	6	9	5	2
GR. B	5	3	0	4	0	GR. B	1	2	1	4	6
GR. C	4	1	0	5	0	GR. C	0	2	1	2	0
GR. D	0	0	1	4	0	GR. D	0	2	0	2	0
GR. E	1	2	0	0	0	GR. E	1	0	0	0	0

DEAL POST TEST 2019-20 - SCHOOL REPORT CARD

PONDY
DIS Z4

34020201308 **GPS SEMBIYAPALAYAM**

All Grades represent the following scorings in % *

GRADE A - >75	* School Status Grade represents the total enrollment of the school (Not %)
GRADE B - 51 TO 75	
GRADE C - 26 TO 50	
GRADE D - 10 TO 25	
GRADE E - <10	

Note: The Values given in the brackets denote the difference between the Pre and Post Test Scores.
(For Example: If the Pre-Test Grade is 'C' and the Post-Test Grade is 'A', then the progress is +2)

SCHOOL GRADE - CB

Status Gr. C (0) Performance Gr. B (0)

OVERALL PERFORMANCE GRADES

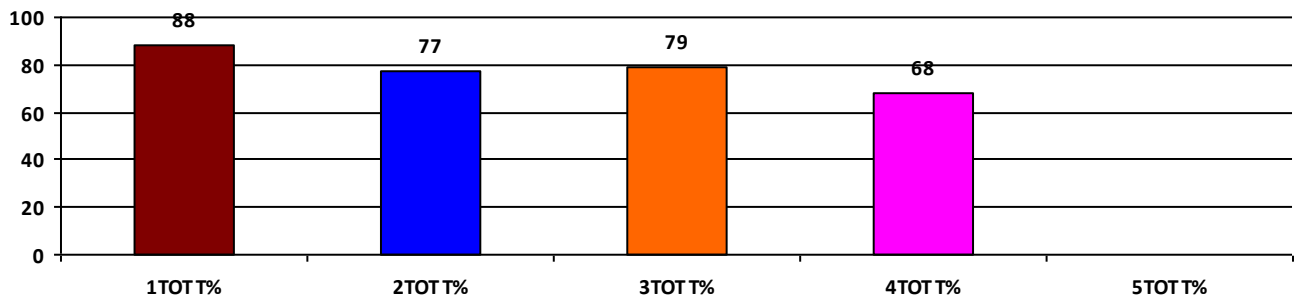
	Boys	Girls	Total
SCHOOL GR.	B	A	B
Diff. to Pre-Test	(0)	(+1)	(0)
DIST. GR.	B	B	B
STATE GR.	B	B	B

CLASSWISE APPEARED

DETAILS	I STD	II STD	III STD	IV STD	V STD
BOYS	2	6	5	8	0
GIRLS	2	11	2	5	0
TOTAL	4	17	7	13	0
Diff. to Pre-Test	(0)	(0)	(0)	(0)	(0)

CLASSWISE PERFORMANCE GRADES (% of marks)

DETAILS	I STD	II STD	III STD	IV STD	V STD
%	88	77	79	68	NA
SCHOOL GR.	A	A	A	B	NA
Diff. to Pre-Test	(0)	(+1)	(+1)	(0)	(+8)
DIST. GR.	A	B	B	B	B
STATE GR.	A	B	B	B	B



GRADEWISE PERFORMANCE (NO. OF STUDENTS)

ENGLISH	1 Std	2 Std	3 Std	4 Std	5 Std	TAMIL	1 Std	2 Std	3 Std	4 Std	5 Std
GR. A	4	8	4	3	0	GR. A	4	15	6	6	0
GR. B	0	6	3	9	0	GR. B	0	1	1	6	0
GR. C	0	2	0	0	0	GR. C	0	0	0	0	0
GR. D	0	1	0	0	0	GR. D	0	0	0	0	0
GR. E	0	0	0	1	0	GR. E	0	1	0	1	0

DEAL POST TEST 2019-20 - SCHOOL REPORT CARD

PONDY
DIS Z4

34020201401 **GPS ERIPAKKAM**

All Grades represent the following scorings in % *

GRADE A - >75	* School Status Grade represents the total enrollment of the school (Not %)
GRADE B - 51 TO 75	
GRADE C - 26 TO 50	
GRADE D - 10 TO 25	
GRADE E - <10	

Note: The Values given in the brackets denote the difference between the Pre and Post Test Scores.
(For Example: If the Pre-Test Grade is 'C' and the Post-Test Grade is 'A', then the progress is +2)

SCHOOL GRADE - DB

Status Gr. D (0) Performance Gr. B(+1)

OVERALL PERFORMANCE GRADES

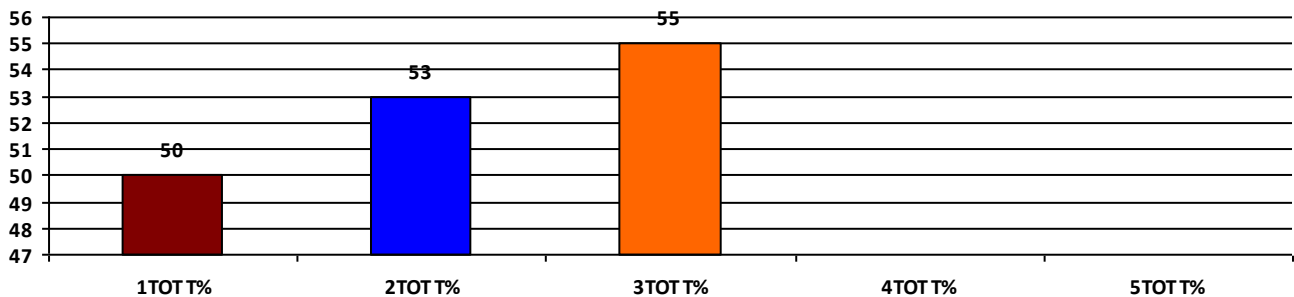
	Boys	Girls	Total
SCHOOL GR.	B	B	B
Diff. to Pre-Test	(+1)	(+1)	(+1)
DIST. GR.	B	B	B
STATE GR.	B	B	B

CLASSWISE APPEARED

DETAILS	I STD	II STD	III STD	IV STD	V STD
BOYS	3	5	3	0	0
GIRLS	3	5	4	0	0
TOTAL	6	10	7	0	0
Diff. to Pre-Test	(+1)	(0)	(-1)	(0)	(0)

CLASSWISE PERFORMANCE GRADES (% of marks)

DETAILS	I STD	II STD	III STD	IV STD	V STD
%	50	53	55	NA	NA
SCHOOL GR.	C	B	B	NA	NA
Diff. to Pre-Test	(0)	(+1)	(+1)	(+8)	(+8)
DIST. GR.	A	B	B	B	B
STATE GR.	A	B	B	B	B



GRADEWISE PERFORMANCE (NO. OF STUDENTS)

ENGLISH	1 Std	2 Std	3 Std	4 Std	5 Std	TAMIL	1 Std	2 Std	3 Std	4 Std	5 Std
GR. A	0	1	2	0	0	GR. A	1	3	0	0	0
GR. B	1	3	3	0	0	GR. B	4	5	5	0	0
GR. C	4	5	2	0	0	GR. C	1	1	2	0	0
GR. D	1	0	0	0	0	GR. D	0	1	0	0	0
GR. E	0	1	0	0	0	GR. E	0	0	0	0	0

DEAL POST TEST 2019-20 - SCHOOL REPORT CARD

PONDY
DIS Z4

34020201601 GPS KADUVANUR

All Grades represent the following scorings in % *

GRADE A - >75	* School Status Grade represents the total enrollment of the school (Not %)
GRADE B - 51 TO 75	
GRADE C - 26 TO 50	
GRADE D - 10 TO 25	
GRADE E - <10	

Note: The Values given in the brackets denote the difference between the Pre and Post Test Scores.
(For Example: If the Pre-Test Grade is 'C' and the Post-Test Grade is 'A', then the progress is +2)

SCHOOL GRADE - CA

Status Gr. C (0) Performance Gr. A(+1)

OVERALL PERFORMANCE GRADES

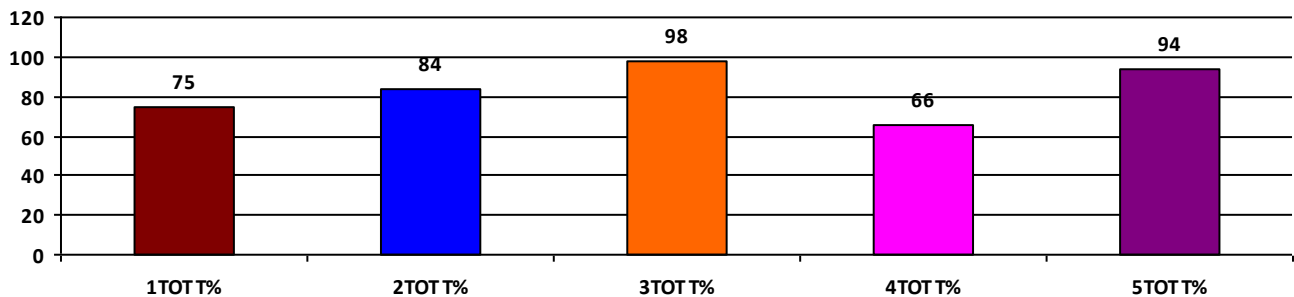
	Boys	Girls	Total
SCHOOL GR.	A	A	A
Diff. to Pre-Test	(+1)	(+1)	(+1)
DIST. GR.	B	B	B
STATE GR.	B	B	B

CLASSWISE APPEARED

DETAILS	I STD	II STD	III STD	IV STD	V STD
BOYS	1	2	2	2	3
GIRLS	2	9	2	2	2
TOTAL	3	11	4	4	5
Diff. to Pre-Test	(0)	(0)	(0)	(0)	(0)

CLASSWISE PERFORMANCE GRADES (% of marks)

DETAILS	I STD	II STD	III STD	IV STD	V STD
%	75	84	98	66	94
SCHOOL GR.	B	A	A	B	A
Diff. to Pre-Test	(+1)	(+2)	(+1)	(0)	(+1)
DIST. GR.	A	B	B	B	B
STATE GR.	A	B	B	B	B



GRADEWISE PERFORMANCE (NO. OF STUDENTS)

ENGLISH	1 Std	2 Std	3 Std	4 Std	5 Std	TAMIL	1 Std	2 Std	3 Std	4 Std	5 Std
GR. A	2	8	4	3	5	GR. A	2	10	4	3	5
GR. B	0	2	0	0	0	GR. B	0	1	0	0	0
GR. C	1	1	0	0	0	GR. C	1	0	0	0	0
GR. D	0	0	0	0	0	GR. D	0	0	0	0	0
GR. E	0	0	0	1	0	GR. E	0	0	0	1	0

DEAL POST TEST 2019-20 - SCHOOL REPORT CARD

PONDY
DIS Z4

34020202001 **GPS KARAYAMPUTHUR**

All Grades represent the following scorings in % *

GRADE A - >75	* School Status Grade represents the total enrollment of the school (Not %)
GRADE B - 51 TO 75	
GRADE C - 26 TO 50	
GRADE D - 10 TO 25	
GRADE E - <10	

Note: The Values given in the brackets denote the difference between the Pre and Post Test Scores.
(For Example: If the Pre-Test Grade is 'C' and the Post-Test Grade is 'A', then the progress is +2)

SCHOOL GRADE - AC

Status Gr. A (0)	Performance Gr. C (0)
------------------	-----------------------

OVERALL PERFORMANCE GRADES

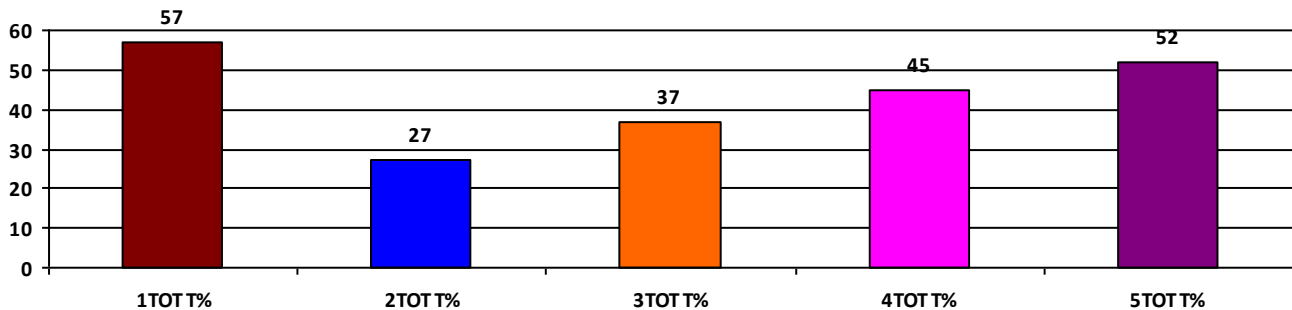
	Boys	Girls	Total
SCHOOL GR.	C	C	C
Diff. to Pre-Test	(0)	(0)	(0)
DIST. GR.	B	B	B
STATE GR.	B	B	B

CLASSWISE APPEARED

DETAILS	I STD	II STD	III STD	IV STD	V STD
BOYS	17	13	21	27	25
GIRLS	16	20	23	27	18
TOTAL	33	33	44	54	43
Diff. to Pre-Test	(+5)	(-3)	(-1)	(0)	(-1)

CLASSWISE PERFORMANCE GRADES (% of marks)

DETAILS	I STD	II STD	III STD	IV STD	V STD
%	57	27	37	45	52
SCHOOL GR.	B	C	C	C	B
Diff. to Pre-Test	(+1)	(0)	(+1)	(-1)	(+1)
DIST. GR.	A	B	B	B	B
STATE GR.	A	B	B	B	B



GRADEWISE PERFORMANCE (NO. OF STUDENTS)

ENGLISH	1 Std	2 Std	3 Std	4 Std	5 Std	TAMIL	1 Std	2 Std	3 Std	4 Std	5 Std
GR. A	9	0	1	1	3	GR. A	3	0	8	23	11
GR. B	14	0	2	10	20	GR. B	15	8	10	10	15
GR. C	8	9	20	16	12	GR. C	12	5	13	12	11
GR. D	2	21	16	23	5	GR. D	2	19	11	8	2
GR. E	0	3	5	4	3	GR. E	1	1	2	1	4

DEAL POST TEST 2019-20 - SCHOOL REPORT CARD

PONDY
DIS Z4

34020202004 GPS SINNAKARAYAMPUTHUR

All Grades represent the following scorings in % *

GRADE A - >75	* School Status Grade represents the total enrollment of the school (Not %)
GRADE B - 51 TO 75	
GRADE C - 26 TO 50	
GRADE D - 10 TO 25	
GRADE E - <10	

Note: The Values given in the brackets denote the difference between the Pre and Post Test Scores.
(For Example: If the Pre-Test Grade is 'C' and the Post-Test Grade is 'A', then the progress is +2)

SCHOOL GRADE - CA

Status Gr. C (0) Performance Gr. A(+2)

OVERALL PERFORMANCE GRADES

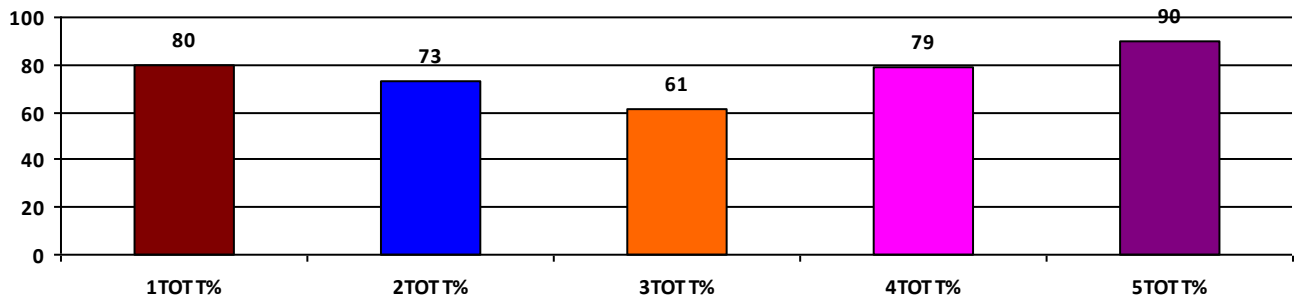
	Boys	Girls	Total
SCHOOL GR.	A	A	A
Diff. to Pre-Test	(+2)	(+2)	(+2)
DIST. GR.	B	B	B
STATE GR.	B	B	B

CLASSWISE APPEARED

DETAILS	I STD	II STD	III STD	IV STD	V STD
BOYS	3	5	2	5	2
GIRLS	1	0	4	2	4
TOTAL	4	5	6	7	6
Diff. to Pre-Test	(-4)	(-3)	(-1)	(-2)	(+1)

CLASSWISE PERFORMANCE GRADES (% of marks)

DETAILS	I STD	II STD	III STD	IV STD	V STD
%	80	73	61	79	90
SCHOOL GR.	A	B	B	A	A
Diff. to Pre-Test	(+1)	(+1)	(+2)	(+2)	(+1)
DIST. GR.	A	B	B	B	B
STATE GR.	A	B	B	B	B



GRADEWISE PERFORMANCE (NO. OF STUDENTS)

ENGLISH	1 Std	2 Std	3 Std	4 Std	5 Std	TAMIL	1 Std	2 Std	3 Std	4 Std	5 Std
GR. A	1	0	0	0	5	GR. A	4	5	3	7	5
GR. B	3	4	4	7	1	GR. B	0	0	0	0	1
GR. C	0	1	2	0	0	GR. C	0	0	3	0	0
GR. D	0	0	0	0	0	GR. D	0	0	0	0	0
GR. E	0	0	0	0	0	GR. E	0	0	0	0	0

DEAL POST TEST 2019-20 - SCHOOL REPORT CARD

PONDY
DIS Z4

34020202105 GPS SOORAMANGALAMPET

All Grades represent the following scorings in % *

GRADE A - >75	* School Status Grade represents the total enrollment of the school (Not %)
GRADE B - 51 TO 75	
GRADE C - 26 TO 50	
GRADE D - 10 TO 25	
GRADE E - <10	

Note: The Values given in the brackets denote the difference between the Pre and Post Test Scores.
(For Example: If the Pre-Test Grade is 'C' and the Post-Test Grade is 'A', then the progress is +2)

SCHOOL GRADE - AB

Status Gr. A (0) Performance Gr. B(+1)

OVERALL PERFORMANCE GRADES

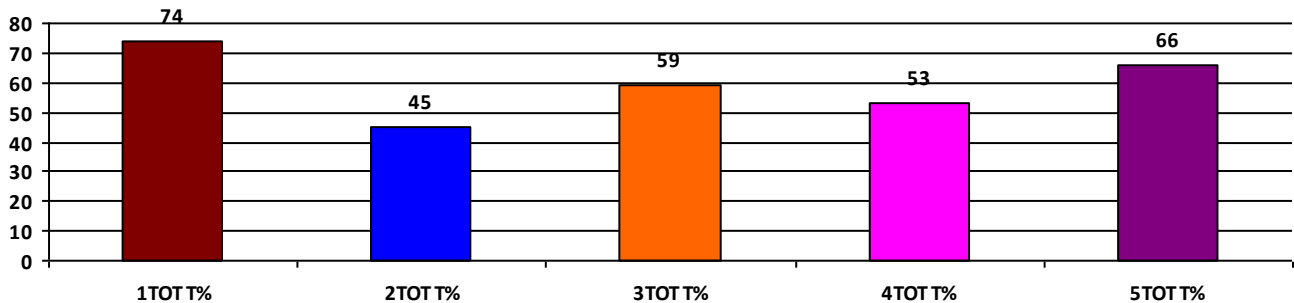
	Boys	Girls	Total
SCHOOL GR.	B	B	B
Diff. to Pre-Test	(+1)	(0)	(+1)
DIST. GR.	B	B	B
STATE GR.	B	B	B

CLASSWISE APPEARED

DETAILS	I STD	II STD	III STD	IV STD	V STD
BOYS	4	5	6	10	11
GIRLS	6	9	6	11	12
TOTAL	10	14	12	21	23
Diff. to Pre-Test	(0)	(-2)	(+3)	(+2)	(+1)

CLASSWISE PERFORMANCE GRADES (% of marks)

DETAILS	I STD	II STD	III STD	IV STD	V STD
%	74	45	59	53	66
SCHOOL GR.	B	C	B	B	B
Diff. to Pre-Test	(0)	(-1)	(+1)	(+1)	(0)
DIST. GR.	A	B	B	B	B
STATE GR.	A	B	B	B	B



GRADEWISE PERFORMANCE (NO. OF STUDENTS)

ENGLISH	1 Std	2 Std	3 Std	4 Std	5 Std	TAMIL	1 Std	2 Std	3 Std	4 Std	5 Std
GR. A	6	0	0	2	7	GR. A	7	1	4	4	13
GR. B	2	3	4	7	8	GR. B	1	7	7	10	6
GR. C	1	8	8	9	7	GR. C	2	4	1	5	3
GR. D	1	1	0	1	1	GR. D	0	1	0	1	1
GR. E	0	2	0	2	0	GR. E	0	1	0	1	0

DEAL POST TEST 2019-20 - SCHOOL REPORT CARD

PONDY
DIS Z4

34020202201 **GPS KARIKALAMPAKKAM**

All Grades represent the following scorings in % *

GRADE A - >75	* School Status Grade represents the total enrollment of the school (Not %)
GRADE B - 51 TO 75	
GRADE C - 26 TO 50	
GRADE D - 10 TO 25	
GRADE E - <10	

Note: The Values given in the brackets denote the difference between the Pre and Post Test Scores.
(For Example: If the Pre-Test Grade is 'C' and the Post-Test Grade is 'A', then the progress is +2)

SCHOOL GRADE - AB

Status Gr. A (0)	Performance Gr. B (0)
------------------	-----------------------

OVERALL PERFORMANCE GRADES

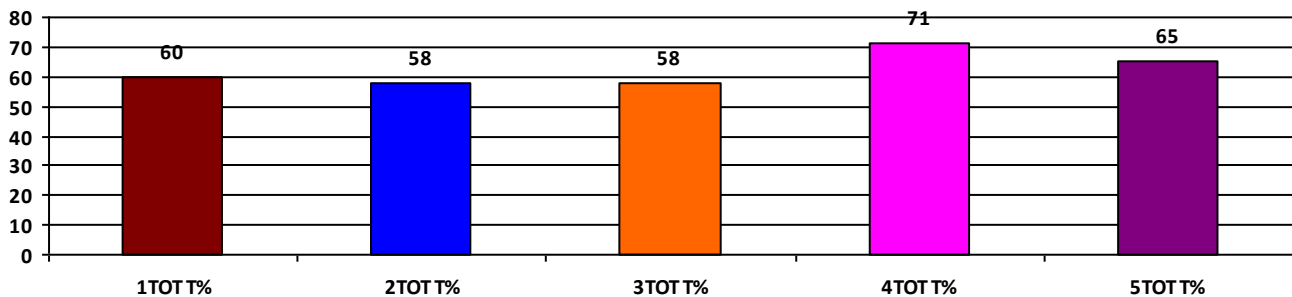
	Boys	Girls	Total
SCHOOL GR.	B	B	B
Diff. to Pre-Test	(+1)	(0)	(0)
DIST. GR.	B	B	B
STATE GR.	B	B	B

CLASSWISE APPEARED

DETAILS	I STD	II STD	III STD	IV STD	V STD
BOYS	19	10	14	12	11
GIRLS	15	11	21	15	16
TOTAL	34	21	35	27	27
Diff. to Pre-Test	(-6)	(+1)	(-1)	(+2)	(+1)

CLASSWISE PERFORMANCE GRADES (% of marks)

DETAILS	I STD	II STD	III STD	IV STD	V STD
%	60	58	58	71	65
SCHOOL GR.	B	B	B	B	B
Diff. to Pre-Test	(0)	(+1)	(+1)	(+1)	(0)
DIST. GR.	A	B	B	B	B
STATE GR.	A	B	B	B	B



GRADEWISE PERFORMANCE (NO. OF STUDENTS)

ENGLISH	1 Std	2 Std	3 Std	4 Std	5 Std	TAMIL	1 Std	2 Std	3 Std	4 Std	5 Std
GR. A	3	2	9	10	6	GR. A	12	5	11	14	14
GR. B	18	11	8	10	12	GR. B	16	8	16	10	8
GR. C	10	4	13	6	8	GR. C	6	5	7	3	4
GR. D	3	4	4	1	1	GR. D	0	3	0	0	0
GR. E	0	0	1	0	0	GR. E	0	0	1	0	1

DEAL POST TEST 2019-20 - SCHOOL REPORT CARD

PONDY
DIS Z4

34020202702 **GPS KORKKADU**

All Grades represent the following scorings in % *

GRADE A - >75	* School Status Grade represents the total enrollment of the school (Not %)
GRADE B - 51 TO 75	
GRADE C - 26 TO 50	
GRADE D - 10 TO 25	
GRADE E - <10	

Note: The Values given in the brackets denote the difference between the Pre and Post Test Scores.
(For Example: If the Pre-Test Grade is 'C' and the Post-Test Grade is 'A', then the progress is +2)

SCHOOL GRADE - BB

Status Gr. B (0) Performance Gr. B (0)

OVERALL PERFORMANCE GRADES

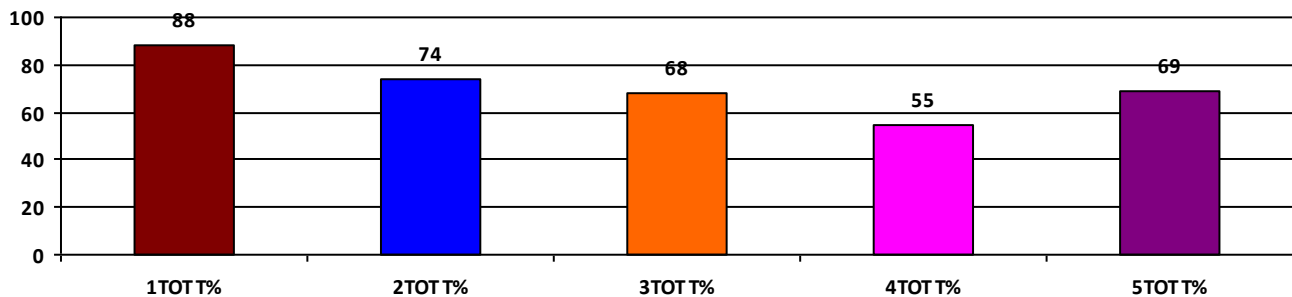
	Boys	Girls	Total
SCHOOL GR.	B	B	B
Diff. to Pre-Test	(0)	(0)	(0)
DIST. GR.	B	B	B
STATE GR.	B	B	B

CLASSWISE APPEARED

DETAILS	I STD	II STD	III STD	IV STD	V STD
BOYS	5	4	3	8	10
GIRLS	1	2	6	8	10
TOTAL	6	6	9	16	20
Diff. to Pre-Test	(0)	(-1)	(+2)	(-1)	(+1)

CLASSWISE PERFORMANCE GRADES (% of marks)

DETAILS	I STD	II STD	III STD	IV STD	V STD
%	88	74	68	55	69
SCHOOL GR.	A	B	B	B	B
Diff. to Pre-Test	(+1)	(0)	(+1)	(+1)	(0)
DIST. GR.	A	B	B	B	B
STATE GR.	A	B	B	B	B



GRADEWISE PERFORMANCE (NO. OF STUDENTS)

ENGLISH	1 Std	2 Std	3 Std	4 Std	5 Std	TAMIL	1 Std	2 Std	3 Std	4 Std	5 Std
GR. A	6	4	6	0	4	GR. A	5	2	2	8	12
GR. B	0	2	2	5	11	GR. B	1	2	6	3	8
GR. C	0	0	0	8	4	GR. C	0	2	0	4	0
GR. D	0	0	1	2	1	GR. D	0	0	1	0	0
GR. E	0	0	0	1	0	GR. E	0	0	0	1	0

DEAL POST TEST 2019-20 - SCHOOL REPORT CARD

PONDY
DIS Z4

34020203201 **GPS MADUKARAI**

All Grades represent the following scorings in % *

GRADE A - >75	
GRADE B - 51 TO 75	* School Status Grade
GRADE C - 26 TO 50	represents the total
GRADE D - 10 TO 25	enrollment of the
GRADE E - <10	school (Not %)

Note: The Values given in the brackets denote the difference between the Pre and Post Test Scores.
(For Example: If the Pre-Test Grade is 'C' and the Post-Test Grade is 'A', then the progress is +2)

SCHOOL GRADE - AB

Status Gr. A (0)	Performance Gr. B(+1)
------------------	-----------------------

OVERALL PERFORMANCE GRADES

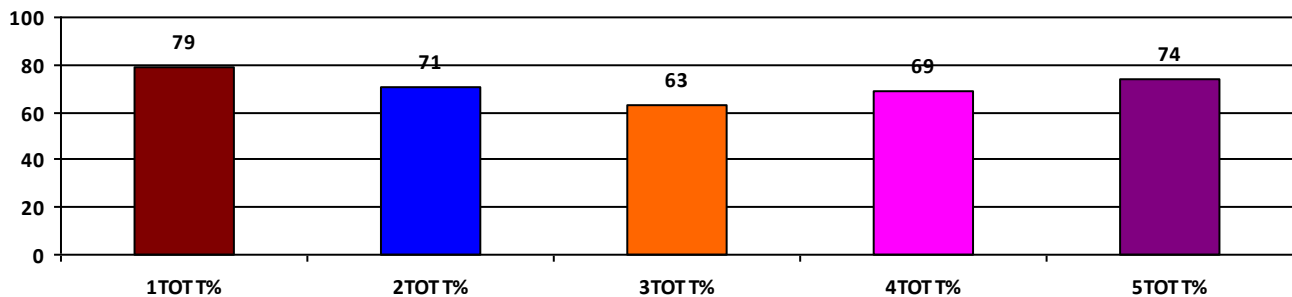
	Boys	Girls	Total
SCHOOL GR.	B	A	B
Diff. to Pre-Test	(+1)	(+1)	(+1)
DIST. GR.	B	B	B
STATE GR.	B	B	B

CLASSWISE APPEARED

DETAILS	I STD	II STD	III STD	IV STD	V STD
BOYS	35	44	51	42	40
GIRLS	43	42	49	56	54
TOTAL	78	86	100	98	94
Diff. to Pre-Test	(-4)	(-3)	(+2)	(-3)	(+1)

CLASSWISE PERFORMANCE GRADES (% of marks)

DETAILS	I STD	II STD	III STD	IV STD	V STD
%	79	71	63	69	74
SCHOOL GR.	A	B	B	B	B
Diff. to Pre-Test	(+1)	(0)	(+1)	(+1)	(0)
DIST. GR.	A	B	B	B	B
STATE GR.	A	B	B	B	B



GRADEWISE PERFORMANCE (NO. OF STUDENTS)

ENGLISH	1 Std	2 Std	3 Std	4 Std	5 Std	TAMIL	1 Std	2 Std	3 Std	4 Std	5 Std
GR. A	43	30	28	20	55	GR. A	60	56	50	49	58
GR. B	29	39	29	64	22	GR. B	14	17	17	44	27
GR. C	3	14	36	12	11	GR. C	1	11	30	5	4
GR. D	2	3	6	2	4	GR. D	3	2	2	0	3
GR. E	1	0	1	0	2	GR. E	0	0	1	0	2

DEAL POST TEST 2019-20 - SCHOOL REPORT CARD

PONDY
DIS Z4

34020203206 GPS MADUKARAIPET

All Grades represent the following scorings in % *

GRADE A - >75	
GRADE B - 51 TO 75	* School Status Grade
GRADE C - 26 TO 50	represents the total
GRADE D - 10 TO 25	enrollment of the
GRADE E - <10	school (Not %)

Note: The Values given in the brackets denote the difference between the Pre and Post Test Scores.
(For Example: If the Pre-Test Grade is 'C' and the Post-Test Grade is 'A', then the progress is +2)

SCHOOL GRADE - AB

Status Gr. A (0) Performance Gr. B (0)

OVERALL PERFORMANCE GRADES

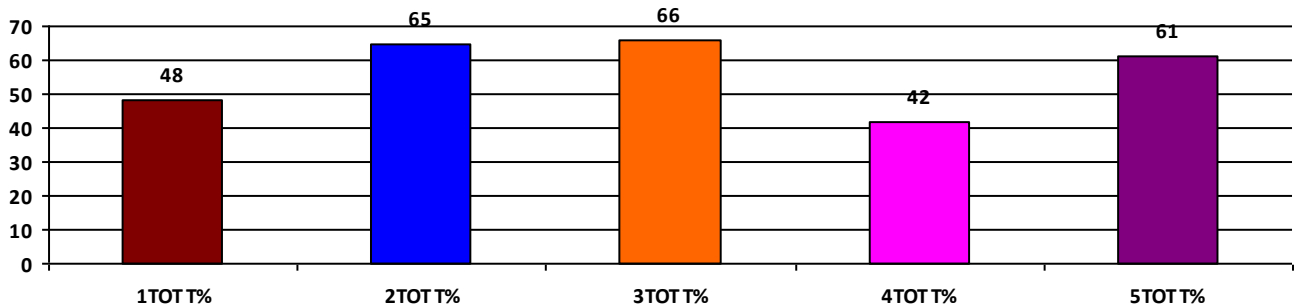
	Boys	Girls	Total
SCHOOL GR.	B	B	B
Diff. to Pre-Test	(0)	(0)	(0)
DIST. GR.	B	B	B
STATE GR.	B	B	B

CLASSWISE APPEARED

DETAILS	I STD	II STD	III STD	IV STD	V STD
BOYS	9	8	13	10	5
GIRLS	5	3	5	13	6
TOTAL	14	11	18	23	11
Diff. to Pre-Test	(-2)	(+3)	(0)	(0)	(0)

CLASSWISE PERFORMANCE GRADES (% of marks)

DETAILS	I STD	II STD	III STD	IV STD	V STD
%	48	65	66	42	61
SCHOOL GR.	C	B	B	C	B
Diff. to Pre-Test	(-1)	(0)	(0)	(0)	(0)
DIST. GR.	A	B	B	B	B
STATE GR.	A	B	B	B	B



GRADEWISE PERFORMANCE (NO. OF STUDENTS)

ENGLISH	1 Std	2 Std	3 Std	4 Std	5 Std	TAMIL	1 Std	2 Std	3 Std	4 Std	5 Std
GR. A	0	2	5	3	3	GR. A	3	6	13	4	5
GR. B	6	7	7	3	5	GR. B	5	2	1	6	3
GR. C	5	2	5	9	1	GR. C	4	3	3	6	1
GR. D	3	0	0	5	2	GR. D	2	0	0	5	2
GR. E	0	0	1	3	0	GR. E	0	0	1	2	0

DEAL POST TEST 2019-20 - SCHOOL REPORT CARD

PONDY
DIS Z4

34020203401 GPS MANAMEDU

All Grades represent the following scorings in % *

GRADE A - >75	
GRADE B - 51 TO 75	* School Status Grade
GRADE C - 26 TO 50	represents the total
GRADE D - 10 TO 25	enrollment of the
GRADE E - <10	school (Not %)

Note: The Values given in the brackets denote the difference between the Pre and Post Test Scores.
(For Example: If the Pre-Test Grade is 'C' and the Post-Test Grade is 'A', then the progress is +2)

SCHOOL GRADE - BA

Status Gr. B (0) Performance Gr. A(+2)

OVERALL PERFORMANCE GRADES

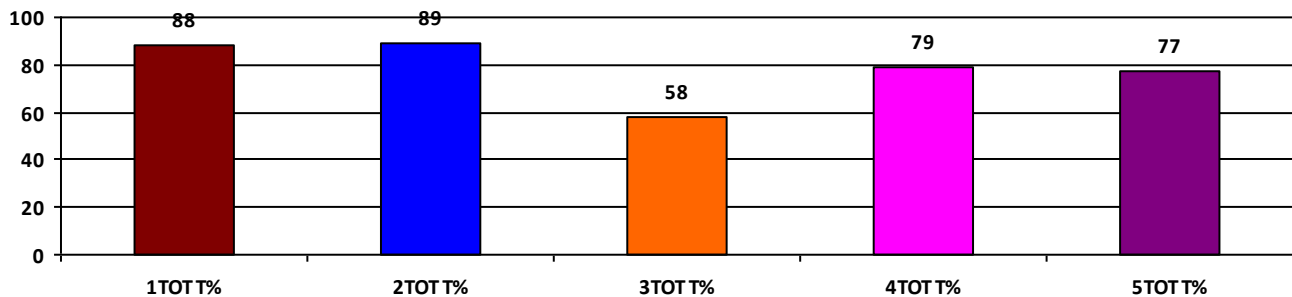
	Boys	Girls	Total
SCHOOL GR.	A	A	A
Diff. to Pre-Test	(+2)	(+1)	(+2)
DIST. GR.	B	B	B
STATE GR.	B	B	B

CLASSWISE APPEARED

DETAILS	I STD	II STD	III STD	IV STD	V STD
BOYS	4	7	4	3	9
GIRLS	4	9	4	10	8
TOTAL	8	16	8	13	17
Diff. to Pre-Test	(+2)	(0)	(0)	(0)	(0)

CLASSWISE PERFORMANCE GRADES (% of marks)

DETAILS	I STD	II STD	III STD	IV STD	V STD
%	88	89	58	79	77
SCHOOL GR.	A	A	B	A	A
Diff. to Pre-Test	(+1)	(+2)	(0)	(+1)	(+2)
DIST. GR.	A	B	B	B	B
STATE GR.	A	B	B	B	B



GRADEWISE PERFORMANCE (NO. OF STUDENTS)

ENGLISH	1 Std	2 Std	3 Std	4 Std	5 Std	TAMIL	1 Std	2 Std	3 Std	4 Std	5 Std
GR. A	7	12	1	6	9	GR. A	6	15	4	12	12
GR. B	1	4	4	6	6	GR. B	2	1	3	1	4
GR. C	0	0	1	1	2	GR. C	0	0	0	0	1
GR. D	0	0	1	0	0	GR. D	0	0	0	0	0
GR. E	0	0	1	0	0	GR. E	0	0	1	0	0

DEAL POST TEST 2019-20 - SCHOOL REPORT CARD

PONDY
DIS Z4

34020204601 **GPS NETTAPAKKAM**

All Grades represent the following scorings in % *

GRADE A - >75	* School Status Grade represents the total enrollment of the school (Not %)
GRADE B - 51 TO 75	
GRADE C - 26 TO 50	
GRADE D - 10 TO 25	
GRADE E - <10	

Note: The Values given in the brackets denote the difference between the Pre and Post Test Scores.
(For Example: If the Pre-Test Grade is 'C' and the Post-Test Grade is 'A', then the progress is +2)

SCHOOL GRADE - AB

Status Gr. A (0)	Performance Gr. B (0)
------------------	-----------------------

OVERALL PERFORMANCE GRADES

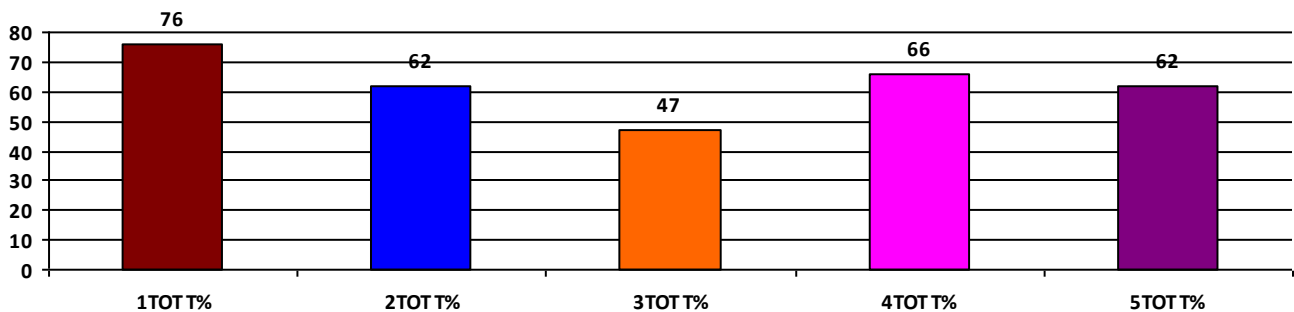
	Boys	Girls	Total
SCHOOL GR.	B	B	B
Diff. to Pre-Test	(+1)	(0)	(0)
DIST. GR.	B	B	B
STATE GR.	B	B	B

CLASSWISE APPEARED

DETAILS	I STD	II STD	III STD	IV STD	V STD
BOYS	16	17	19	25	32
GIRLS	14	12	21	33	44
TOTAL	30	29	40	58	76
Diff. to Pre-Test	(+1)	(+1)	(+3)	(+2)	(+4)

CLASSWISE PERFORMANCE GRADES (% of marks)

DETAILS	I STD	II STD	III STD	IV STD	V STD
%	76	62	47	66	62
SCHOOL GR.	A	B	C	B	B
Diff. to Pre-Test	(+1)	(0)	(0)	(0)	(0)
DIST. GR.	A	B	B	B	B
STATE GR.	A	B	B	B	B



GRADEWISE PERFORMANCE (NO. OF STUDENTS)

ENGLISH	1 Std	2 Std	3 Std	4 Std	5 Std	TAMIL	1 Std	2 Std	3 Std	4 Std	5 Std
GR. A	12	6	5	21	26	GR. A	24	9	8	30	37
GR. B	13	14	8	21	25	GR. B	6	9	11	14	18
GR. C	3	6	17	14	13	GR. C	0	11	17	12	10
GR. D	2	3	7	1	9	GR. D	0	0	1	1	9
GR. E	0	0	3	1	3	GR. E	0	0	3	1	2

DEAL POST TEST 2019-20 - SCHOOL REPORT CARD

PONDY
DIS Z4

34020205004 GPS PANDASOZHANALLUR PET

All Grades represent the following scorings in % *

GRADE A - >75	
GRADE B - 51 TO 75	* School Status Grade
GRADE C - 26 TO 50	represents the total
GRADE D - 10 TO 25	enrollment of the
GRADE E - <10	school (Not %)

Note: The Values given in the brackets denote the difference between the Pre and Post Test Scores.
(For Example: If the Pre-Test Grade is 'C' and the Post-Test Grade is 'A', then the progress is +2)

SCHOOL GRADE - BB

Status Gr. B (0)	Performance Gr. B(+1)
------------------	-----------------------

OVERALL PERFORMANCE GRADES

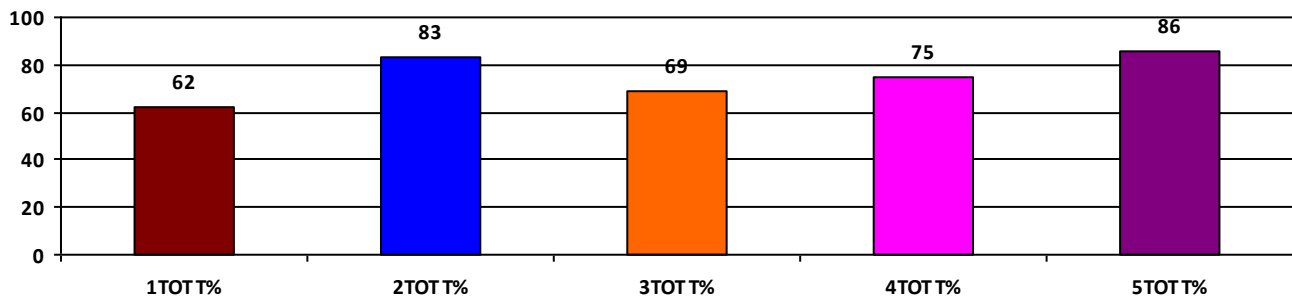
	Boys	Girls	Total
SCHOOL GR.	B	B	B
Diff. to Pre-Test	(+1)	(+1)	(+1)
DIST. GR.	B	B	B
STATE GR.	B	B	B

CLASSWISE APPEARED

DETAILS	I STD	II STD	III STD	IV STD	V STD
BOYS	6	7	12	10	7
GIRLS	5	6	8	6	4
TOTAL	11	13	20	16	11
Diff. to Pre-Test	(0)	(0)	(+1)	(0)	(+2)

CLASSWISE PERFORMANCE GRADES (% of marks)

DETAILS	I STD	II STD	III STD	IV STD	V STD
%	62	83	69	75	86
SCHOOL GR.	B	A	B	B	A
Diff. to Pre-Test	(+1)	(+2)	(+1)	(+1)	(+1)
DIST. GR.	A	B	B	B	B
STATE GR.	A	B	B	B	B



GRADEWISE PERFORMANCE (NO. OF STUDENTS)

ENGLISH	1 Std	2 Std	3 Std	4 Std	5 Std	TAMIL	1 Std	2 Std	3 Std	4 Std	5 Std
GR. A	0	9	9	6	9	GR. A	2	10	8	13	10
GR. B	7	2	6	6	2	GR. B	9	1	10	1	1
GR. C	4	2	5	4	0	GR. C	0	2	2	2	0
GR. D	0	0	0	0	0	GR. D	0	0	0	0	0
GR. E	0	0	0	0	0	GR. E	0	0	0	0	0

DEAL POST TEST 2019-20 - SCHOOL REPORT CARD

PONDY
DIS Z4

34020205005 **GPS VADUVAKUPPAM**

All Grades represent the following scorings in % *

GRADE A - >75	
GRADE B - 51 TO 75	* School Status Grade
GRADE C - 26 TO 50	represents the total
GRADE D - 10 TO 25	enrollment of the
GRADE E - <10	school (Not %)

Note: The Values given in the brackets denote the difference between the Pre and Post Test Scores.
(For Example: If the Pre-Test Grade is 'C' and the Post-Test Grade is 'A', then the progress is +2)

SCHOOL GRADE - BB

Status Gr. B (0) Performance Gr. B(+1)

OVERALL PERFORMANCE GRADES

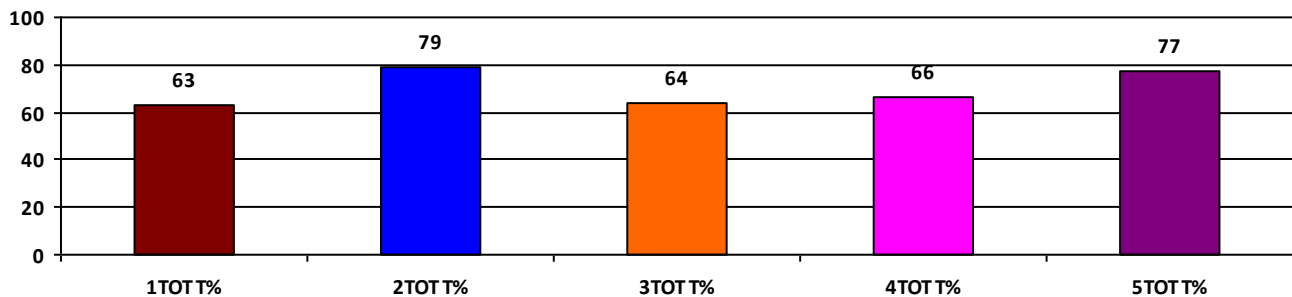
	Boys	Girls	Total
SCHOOL GR.	B	B	B
Diff. to Pre-Test	(+1)	(+1)	(+1)
DIST. GR.	B	B	B
STATE GR.	B	B	B

CLASSWISE APPEARED

DETAILS	I STD	II STD	III STD	IV STD	V STD
BOYS	4	5	7	6	6
GIRLS	5	2	7	2	7
TOTAL	9	7	14	8	13
Diff. to Pre-Test	(-1)	(0)	(0)	(0)	(+1)

CLASSWISE PERFORMANCE GRADES (% of marks)

DETAILS	I STD	II STD	III STD	IV STD	V STD
%	63	79	64	66	77
SCHOOL GR.	B	A	B	B	A
Diff. to Pre-Test	(+1)	(+2)	(+1)	(0)	(+1)
DIST. GR.	A	B	B	B	B
STATE GR.	A	B	B	B	B



GRADEWISE PERFORMANCE (NO. OF STUDENTS)

ENGLISH	1 Std	2 Std	3 Std	4 Std	5 Std	TAMIL	1 Std	2 Std	3 Std	4 Std	5 Std
GR. A	1	4	5	0	6	GR. A	3	4	7	6	11
GR. B	6	2	4	5	4	GR. B	5	3	4	1	1
GR. C	1	1	3	3	2	GR. C	0	0	3	1	1
GR. D	1	0	2	0	1	GR. D	1	0	0	0	0
GR. E	0	0	0	0	0	GR. E	0	0	0	0	0

DEAL POST TEST 2019-20 - SCHOOL REPORT CARD

PONDY
DIS Z4

34020300505 **GPS, ANANDHAPURAM**

All Grades represent the following scorings in % *

GRADE A - >75	
GRADE B - 51 TO 75	* School Status Grade
GRADE C - 26 TO 50	represents the total
GRADE D - 10 TO 25	enrollment of the
GRADE E - <10	school (Not %)

Note: The Values given in the brackets denote the difference between the Pre and Post Test Scores.
(For Example: If the Pre-Test Grade is 'C' and the Post-Test Grade is 'A', then the progress is +2)

SCHOOL GRADE - DB

Status Gr. D (0) Performance Gr. B (0)

OVERALL PERFORMANCE GRADES

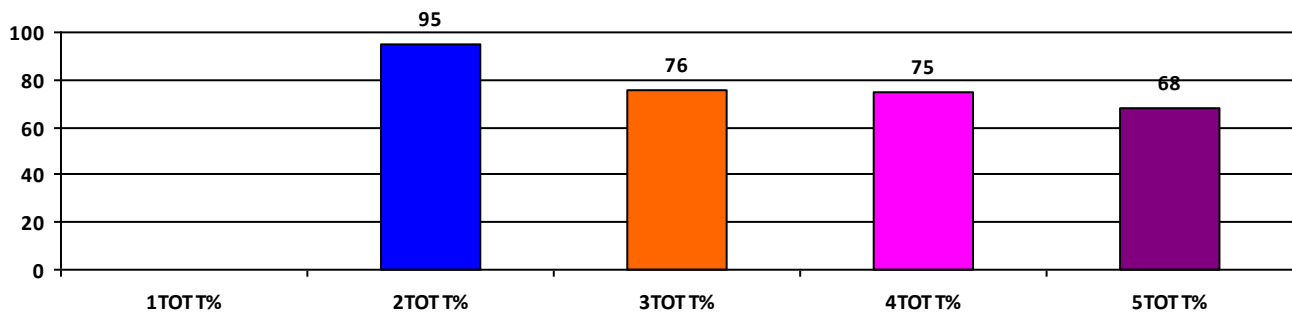
	Boys	Girls	Total
SCHOOL GR.	A	B	B
Diff. to Pre-Test	(0)	(0)	(0)
DIST. GR.	B	B	B
STATE GR.	B	B	B

CLASSWISE APPEARED

DETAILS	I STD	II STD	III STD	IV STD	V STD
BOYS	0	1	5	0	3
GIRLS	0	1	2	2	4
TOTAL	0	2	7	2	7
Diff. to Pre-Test	(0)	(0)	(0)	(0)	(0)

CLASSWISE PERFORMANCE GRADES (% of marks)

DETAILS	I STD	II STD	III STD	IV STD	V STD
%	NA	95	76	75	68
SCHOOL GR.	NA	A	A	B	B
Diff. to Pre-Test	(+8)	(0)	(+1)	(0)	(0)
DIST. GR.	A	B	B	B	B
STATE GR.	A	B	B	B	B



GRADEWISE PERFORMANCE (NO. OF STUDENTS)

ENGLISH	1 Std	2 Std	3 Std	4 Std	5 Std	TAMIL	1 Std	2 Std	3 Std	4 Std	5 Std
GR. A	0	2	6	1	3	GR. A	0	2	5	1	3
GR. B	0	0	0	1	3	GR. B	0	0	1	1	3
GR. C	0	0	0	0	0	GR. C	0	0	0	0	0
GR. D	0	0	0	0	0	GR. D	0	0	0	0	0
GR. E	0	0	1	0	1	GR. E	0	0	1	0	1

DEAL POST TEST 2019-20 - SCHOOL REPORT CARD

PONDY
DIS Z4

34020300506 **GPS PANGUR**

All Grades represent the following scorings in % *

GRADE A - >75	* School Status Grade represents the total enrollment of the school (Not %)
GRADE B - 51 TO 75	
GRADE C - 26 TO 50	
GRADE D - 10 TO 25	
GRADE E - <10	

Note: The Values given in the brackets denote the difference between the Pre and Post Test Scores.
(For Example: If the Pre-Test Grade is 'C' and the Post-Test Grade is 'A', then the progress is +2)

SCHOOL GRADE - BA

Status Gr. B (0) Performance Gr. A(+1)

OVERALL PERFORMANCE GRADES

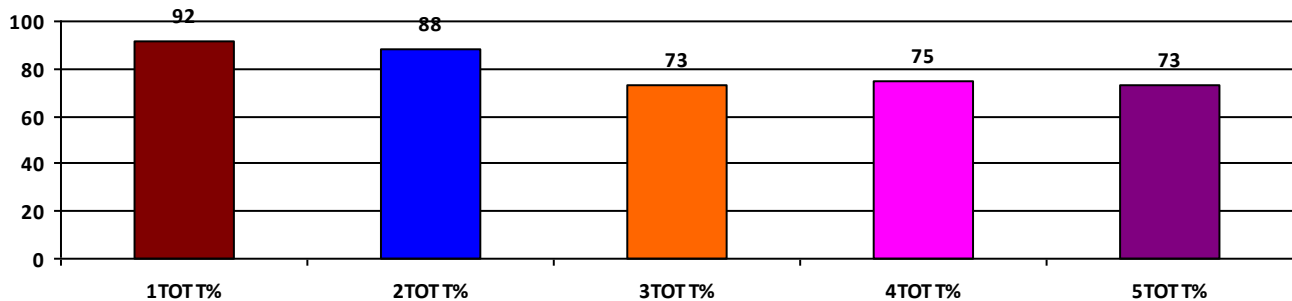
	Boys	Girls	Total
SCHOOL GR.	A	A	A
Diff. to Pre-Test	(+1)	(+1)	(+1)
DIST. GR.	B	B	B
STATE GR.	B	B	B

CLASSWISE APPEARED

DETAILS	I STD	II STD	III STD	IV STD	V STD
BOYS	7	8	5	7	5
GIRLS	6	7	6	4	3
TOTAL	13	15	11	11	8
Diff. to Pre-Test	(-1)	(-1)	(+1)	(0)	(+1)

CLASSWISE PERFORMANCE GRADES (% of marks)

DETAILS	I STD	II STD	III STD	IV STD	V STD
%	92	88	73	75	73
SCHOOL GR.	A	A	B	B	B
Diff. to Pre-Test	(0)	(+1)	(-1)	(0)	(0)
DIST. GR.	A	B	B	B	B
STATE GR.	A	B	B	B	B



GRADEWISE PERFORMANCE (NO. OF STUDENTS)

ENGLISH	1 Std	2 Std	3 Std	4 Std	5 Std	TAMIL	1 Std	2 Std	3 Std	4 Std	5 Std
GR. A	13	14	4	6	4	GR. A	12	13	7	8	6
GR. B	0	1	7	3	3	GR. B	1	2	4	2	1
GR. C	0	0	0	2	0	GR. C	0	0	0	1	0
GR. D	0	0	0	0	1	GR. D	0	0	0	0	1
GR. E	0	0	0	0	0	GR. E	0	0	0	0	0

DEAL POST TEST 2019-20 - SCHOOL REPORT CARD

PONDY
DIS Z4

34020301703 GPS SIVARANTHAGAM-PET

All Grades represent the following scorings in % *

GRADE A - >75	
GRADE B - 51 TO 75	* School Status Grade
GRADE C - 26 TO 50	represents the total
GRADE D - 10 TO 25	enrollment of the
GRADE E - <10	school (Not %)

Note: The Values given in the brackets denote the difference between the Pre and Post Test Scores.
(For Example: If the Pre-Test Grade is 'C' and the Post-Test Grade is 'A', then the progress is +2)

SCHOOL GRADE - CB

Status Gr. C (0) Performance Gr. B (0)

OVERALL PERFORMANCE GRADES

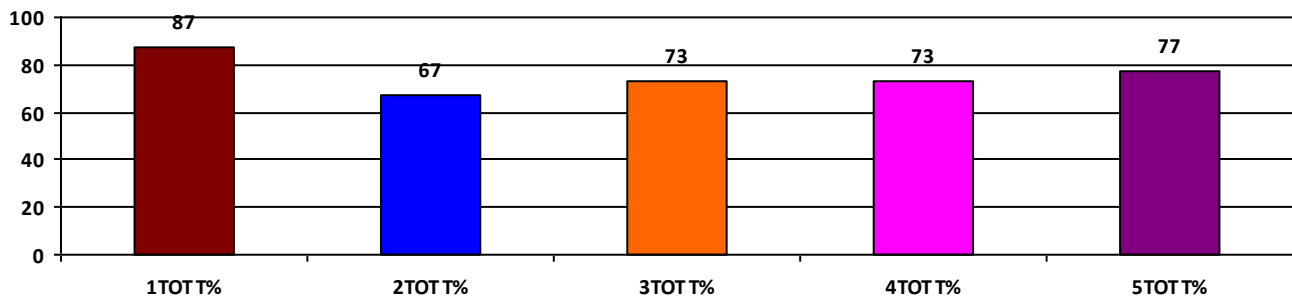
	Boys	Girls	Total
SCHOOL GR.	B	A	B
Diff. to Pre-Test	(0)	(+1)	(0)
DIST. GR.	B	B	B
STATE GR.	B	B	B

CLASSWISE APPEARED

DETAILS	I STD	II STD	III STD	IV STD	V STD
BOYS	4	8	4	3	1
GIRLS	4	3	6	2	7
TOTAL	8	11	10	5	8
Diff. to Pre-Test	(-1)	(+1)	(0)	(0)	(0)

CLASSWISE PERFORMANCE GRADES (% of marks)

DETAILS	I STD	II STD	III STD	IV STD	V STD
%	87	67	73	73	77
SCHOOL GR.	A	B	B	B	A
Diff. to Pre-Test	(+1)	(0)	(0)	(0)	(+1)
DIST. GR.	A	B	B	B	B
STATE GR.	A	B	B	B	B



GRADEWISE PERFORMANCE (NO. OF STUDENTS)

ENGLISH	1 Std	2 Std	3 Std	4 Std	5 Std	TAMIL	1 Std	2 Std	3 Std	4 Std	5 Std
GR. A	6	2	7	2	6	GR. A	7	7	8	3	6
GR. B	2	6	1	2	0	GR. B	1	2	1	2	1
GR. C	0	2	1	1	1	GR. C	0	1	0	0	0
GR. D	0	1	0	0	0	GR. D	0	1	0	0	1
GR. E	0	0	1	0	1	GR. E	0	0	1	0	0

DEAL POST TEST 2019-20 - SCHOOL REPORT CARD

PONDY
DIS Z4

34020302501 **GPS MANAKUPPAM**

All Grades represent the following scorings in % *

GRADE A - >75	* School Status Grade represents the total enrollment of the school (Not %)
GRADE B - 51 TO 75	
GRADE C - 26 TO 50	
GRADE D - 10 TO 25	
GRADE E - <10	

Note: The Values given in the brackets denote the difference between the Pre and Post Test Scores.
(For Example: If the Pre-Test Grade is 'C' and the Post-Test Grade is 'A', then the progress is +2)

SCHOOL GRADE - AA

Status Gr. A (0)	Performance Gr. A(+1)
------------------	-----------------------

OVERALL PERFORMANCE GRADES

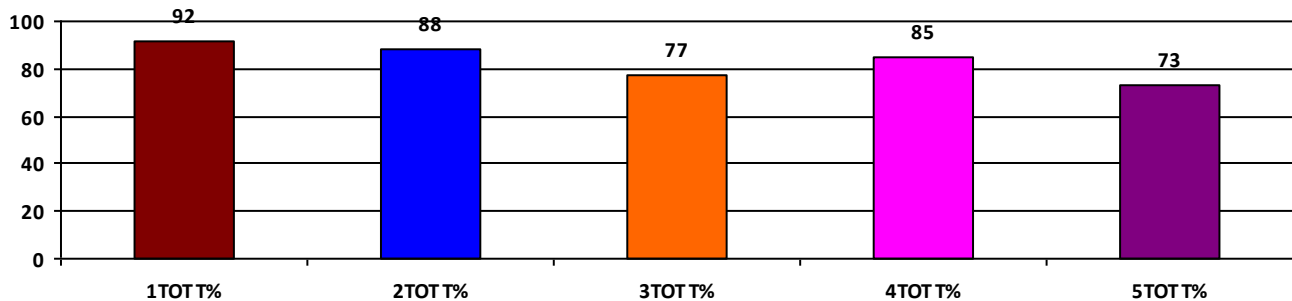
	Boys	Girls	Total
SCHOOL GR.	A	A	A
Diff. to Pre-Test	(+1)	(+1)	(+1)
DIST. GR.	B	B	B
STATE GR.	B	B	B

CLASSWISE APPEARED

DETAILS	I STD	II STD	III STD	IV STD	V STD
BOYS	4	8	12	7	8
GIRLS	9	9	10	5	8
TOTAL	13	17	22	12	16
Diff. to Pre-Test	(+1)	(-2)	(0)	(0)	(0)

CLASSWISE PERFORMANCE GRADES (% of marks)

DETAILS	I STD	II STD	III STD	IV STD	V STD
%	92	88	77	85	73
SCHOOL GR.	A	A	A	A	B
Diff. to Pre-Test	(0)	(+1)	(+2)	(+1)	(0)
DIST. GR.	A	B	B	B	B
STATE GR.	A	B	B	B	B



GRADEWISE PERFORMANCE (NO. OF STUDENTS)

ENGLISH	1 Std	2 Std	3 Std	4 Std	5 Std	TAMIL	1 Std	2 Std	3 Std	4 Std	5 Std
GR. A	11	12	12	10	10	GR. A	13	16	18	11	12
GR. B	2	4	8	1	3	GR. B	0	1	2	0	2
GR. C	0	1	1	1	1	GR. C	0	0	1	1	0
GR. D	0	0	0	0	1	GR. D	0	0	0	0	1
GR. E	0	0	1	0	1	GR. E	0	0	1	0	1

DEAL POST TEST 2019-20 - SCHOOL REPORT CARD

PONDY
DIS Z4

34020302801 **GPS MANGALAM**

All Grades represent the following scorings in % *

GRADE A - >75	* School Status Grade represents the total enrollment of the school (Not %)
GRADE B - 51 TO 75	
GRADE C - 26 TO 50	
GRADE D - 10 TO 25	
GRADE E - <10	

Note: The Values given in the brackets denote the difference between the Pre and Post Test Scores.
(For Example: If the Pre-Test Grade is 'C' and the Post-Test Grade is 'A', then the progress is +2)

SCHOOL GRADE - AA

Status Gr. A (0)	Performance Gr. A(+1)
------------------	-----------------------

OVERALL PERFORMANCE GRADES

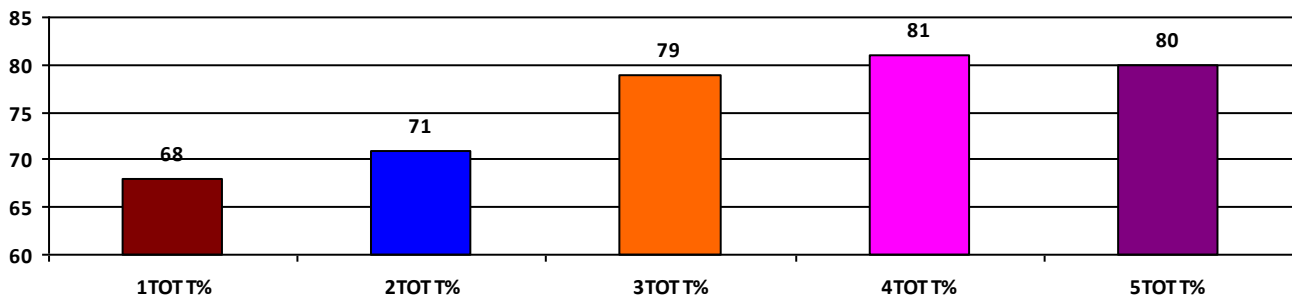
	Boys	Girls	Total
SCHOOL GR.	A	A	A
Diff. to Pre-Test	(+2)	(+1)	(+1)
DIST. GR.	B	B	B
STATE GR.	B	B	B

CLASSWISE APPEARED

DETAILS	I STD	II STD	III STD	IV STD	V STD
BOYS	8	9	5	19	19
GIRLS	10	9	12	17	17
TOTAL	18	18	17	36	36
Diff. to Pre-Test	(+2)	(-1)	(0)	(-5)	(0)

CLASSWISE PERFORMANCE GRADES (% of marks)

DETAILS	I STD	II STD	III STD	IV STD	V STD
%	68	71	79	81	80
SCHOOL GR.	B	B	A	A	A
Diff. to Pre-Test	(0)	(+1)	(+1)	(+1)	(+1)
DIST. GR.	A	B	B	B	B
STATE GR.	A	B	B	B	B



GRADEWISE PERFORMANCE (NO. OF STUDENTS)

ENGLISH	1 Std	2 Std	3 Std	4 Std	5 Std	TAMIL	1 Std	2 Std	3 Std	4 Std	5 Std
GR. A	10	10	14	31	26	GR. A	9	12	15	28	25
GR. B	4	2	1	2	8	GR. B	4	3	0	3	4
GR. C	2	3	1	3	0	GR. C	3	1	1	5	5
GR. D	1	3	0	0	0	GR. D	1	2	0	0	0
GR. E	1	0	1	0	2	GR. E	1	0	1	0	2

DEAL POST TEST 2019-20 - SCHOOL REPORT CARD

PONDY
DIS Z4

34020302804 GPS VADAMANGALAM

All Grades represent the following scorings in % *

GRADE A - >75	
GRADE B - 51 TO 75	* School Status Grade
GRADE C - 26 TO 50	represents the total
GRADE D - 10 TO 25	enrollment of the
GRADE E - <10	school (Not %)

Note: The Values given in the brackets denote the difference between the Pre and Post Test Scores.
(For Example: If the Pre-Test Grade is 'C' and the Post-Test Grade is 'A', then the progress is +2)

SCHOOL GRADE - DB

Status Gr. D (0) Performance Gr. B (0)

OVERALL PERFORMANCE GRADES

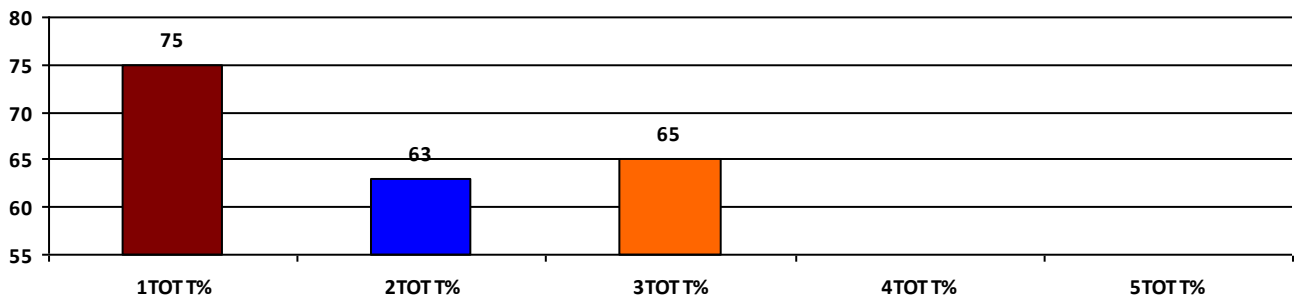
	Boys	Girls	Total
SCHOOL GR.	B	B	B
Diff. to Pre-Test	(0)	(0)	(0)
DIST. GR.	B	B	B
STATE GR.	B	B	B

CLASSWISE APPEARED

DETAILS	I STD	II STD	III STD	IV STD	V STD
BOYS	5	5	0	0	0
GIRLS	3	1	3	0	0
TOTAL	8	6	3	0	0
Diff. to Pre-Test	(0)	(-1)	(0)	(0)	(0)

CLASSWISE PERFORMANCE GRADES (% of marks)

DETAILS	I STD	II STD	III STD	IV STD	V STD
%	75	63	65	NA	NA
SCHOOL GR.	B	B	B	NA	NA
Diff. to Pre-Test	(0)	(0)	(0)	(+8)	(+8)
DIST. GR.	A	B	B	B	B
STATE GR.	A	B	B	B	B



GRADEWISE PERFORMANCE (NO. OF STUDENTS)

ENGLISH	1 Std	2 Std	3 Std	4 Std	5 Std	TAMIL	1 Std	2 Std	3 Std	4 Std	5 Std
GR. A	5	4	2	0	0	GR. A	5	4	2	0	0
GR. B	2	0	0	0	0	GR. B	2	0	0	0	0
GR. C	1	0	0	0	0	GR. C	0	0	0	0	0
GR. D	0	0	0	0	0	GR. D	1	2	0	0	0
GR. E	0	2	1	0	0	GR. E	0	0	1	0	0

DEAL POST TEST 2019-20 - SCHOOL REPORT CARD

PONDY
DIS Z4

34020303301 GPS ODIAMPET

All Grades represent the following scorings in % *

GRADE A - >75	* School Status Grade represents the total enrollment of the school (Not %)
GRADE B - 51 TO 75	
GRADE C - 26 TO 50	
GRADE D - 10 TO 25	
GRADE E - <10	

Note: The Values given in the brackets denote the difference between the Pre and Post Test Scores.
(For Example: If the Pre-Test Grade is 'C' and the Post-Test Grade is 'A', then the progress is +2)

SCHOOL GRADE - CA

Status Gr. C (0) Performance Gr. A(+1)

OVERALL PERFORMANCE GRADES

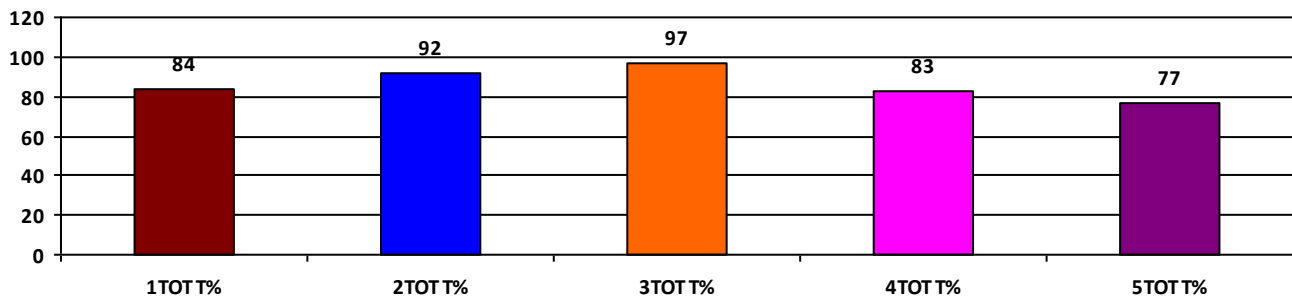
	Boys	Girls	Total
SCHOOL GR.	A	A	A
Diff. to Pre-Test	(+1)	(+1)	(+1)
DIST. GR.	B	B	B
STATE GR.	B	B	B

CLASSWISE APPEARED

DETAILS	I STD	II STD	III STD	IV STD	V STD
BOYS	3	3	1	3	7
GIRLS	3	2	3	4	4
TOTAL	6	5	4	7	11
Diff. to Pre-Test	(+1)	(0)	(0)	(+1)	(-1)

CLASSWISE PERFORMANCE GRADES (% of marks)

DETAILS	I STD	II STD	III STD	IV STD	V STD
%	84	92	97	83	77
SCHOOL GR.	A	A	A	A	A
Diff. to Pre-Test	(0)	(0)	(0)	(+1)	(+1)
DIST. GR.	A	B	B	B	B
STATE GR.	A	B	B	B	B



GRADEWISE PERFORMANCE (NO. OF STUDENTS)

ENGLISH	1 Std	2 Std	3 Std	4 Std	5 Std	TAMIL	1 Std	2 Std	3 Std	4 Std	5 Std
GR. A	4	4	4	4	7	GR. A	4	4	4	6	8
GR. B	2	1	0	3	3	GR. B	2	1	0	1	2
GR. C	0	0	0	0	0	GR. C	0	0	0	0	0
GR. D	0	0	0	0	1	GR. D	0	0	0	0	1
GR. E	0	0	0	0	0	GR. E	0	0	0	0	0

DEAL POST TEST 2019-20 - SCHOOL REPORT CARD

PONDY
DIS Z4

34020303307 **GPS MANAVELY(V)**

All Grades represent the following scorings in % *

GRADE A - >75	
GRADE B - 51 TO 75	* School Status Grade
GRADE C - 26 TO 50	represents the total
GRADE D - 10 TO 25	enrollment of the
GRADE E - <10	school (Not %)

Note: The Values given in the brackets denote the difference between the Pre and Post Test Scores.
(For Example: If the Pre-Test Grade is 'C' and the Post-Test Grade is 'A', then the progress is +2)

SCHOOL GRADE - EA

Status Gr. E (0) Performance Gr. A(+1)

OVERALL PERFORMANCE GRADES

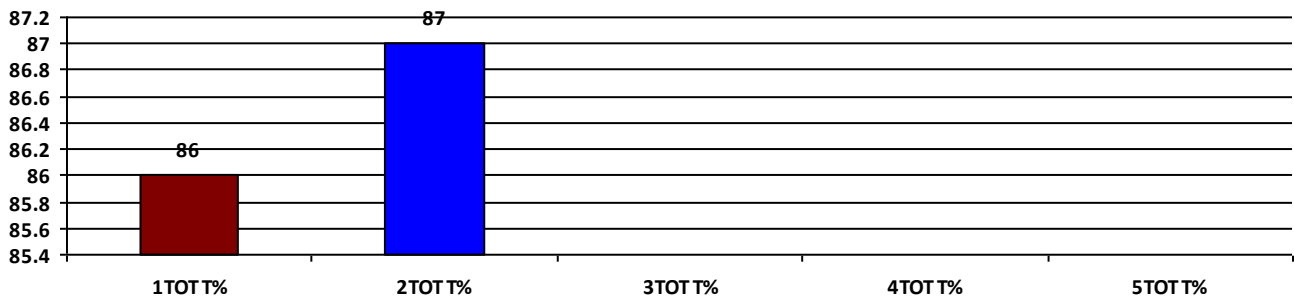
	Boys	Girls	Total
SCHOOL GR.	A	A	A
Diff. to Pre-Test	(+1)	(+2)	(+1)
DIST. GR.	B	B	B
STATE GR.	B	B	B

CLASSWISE APPEARED

DETAILS	I STD	II STD	III STD	IV STD	V STD
BOYS	1	1	0	0	0
GIRLS	0	1	0	0	0
TOTAL	1	2	0	0	0
Diff. to Pre-Test	(0)	(+1)	(0)	(0)	(0)

CLASSWISE PERFORMANCE GRADES (% of marks)

DETAILS	I STD	II STD	III STD	IV STD	V STD
%	86	87	NA	NA	NA
SCHOOL GR.	A	A	NA	NA	NA
Diff. to Pre-Test	(+1)	(+2)	(+8)	(+8)	(+8)
DIST. GR.	A	B	B	B	B
STATE GR.	A	B	B	B	B



GRADEWISE PERFORMANCE (NO. OF STUDENTS)

ENGLISH	1 Std	2 Std	3 Std	4 Std	5 Std	TAMIL	1 Std	2 Std	3 Std	4 Std	5 Std
GR. A	1	2	0	0	0	GR. A	1	2	0	0	0
GR. B	0	0	0	0	0	GR. B	0	0	0	0	0
GR. C	0	0	0	0	0	GR. C	0	0	0	0	0
GR. D	0	0	0	0	0	GR. D	0	0	0	0	0
GR. E	0	0	0	0	0	GR. E	0	0	0	0	0

DEAL POST TEST 2019-20 - SCHOOL REPORT CARD

PONDY
DIS Z4

34020303309 **GPS THATTANCHAVADY**

All Grades represent the following scorings in % *

GRADE A - >75	
GRADE B - 51 TO 75	* School Status Grade
GRADE C - 26 TO 50	represents the total
GRADE D - 10 TO 25	enrollment of the
GRADE E - <10	school (Not %)

Note: The Values given in the brackets denote the difference between the Pre and Post Test Scores.
(For Example: If the Pre-Test Grade is 'C' and the Post-Test Grade is 'A', then the progress is +2)

SCHOOL GRADE - AB

Status Gr. A (0)	Performance Gr. B(+1)
------------------	-----------------------

OVERALL PERFORMANCE GRADES

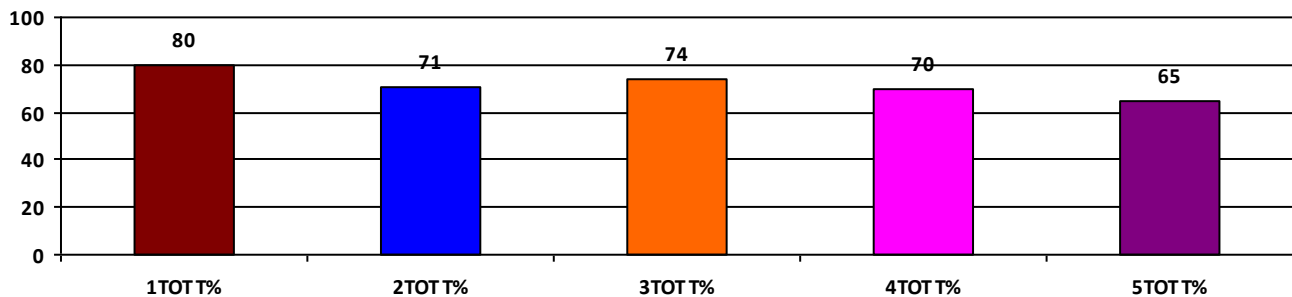
	Boys	Girls	Total
SCHOOL GR.	B	B	B
Diff. to Pre-Test	(+1)	(0)	(+1)
DIST. GR.	B	B	B
STATE GR.	B	B	B

CLASSWISE APPEARED

DETAILS	I STD	II STD	III STD	IV STD	V STD
BOYS	7	10	5	9	9
GIRLS	7	7	10	9	5
TOTAL	14	17	15	18	14
Diff. to Pre-Test	(0)	(0)	(+1)	(0)	(0)

CLASSWISE PERFORMANCE GRADES (% of marks)

DETAILS	I STD	II STD	III STD	IV STD	V STD
%	80	71	74	70	65
SCHOOL GR.	A	B	B	B	B
Diff. to Pre-Test	(+1)	(0)	(0)	(+1)	(+1)
DIST. GR.	A	B	B	B	B
STATE GR.	A	B	B	B	B



GRADEWISE PERFORMANCE (NO. OF STUDENTS)

ENGLISH	1 Std	2 Std	3 Std	4 Std	5 Std	TAMIL	1 Std	2 Std	3 Std	4 Std	5 Std
GR. A	11	10	8	6	4	GR. A	11	13	10	14	6
GR. B	0	2	4	7	6	GR. B	1	1	3	2	5
GR. C	1	3	1	1	4	GR. C	1	1	1	1	3
GR. D	1	0	1	3	0	GR. D	0	1	0	0	0
GR. E	1	2	1	1	0	GR. E	1	1	1	1	0

DEAL POST TEST 2019-20 - SCHOOL REPORT CARD

PONDY
DIS Z4

34020303601 **GPS PERUNGALUR**

All Grades represent the following scorings in % *

GRADE A - >75	* School Status Grade represents the total enrollment of the school (Not %)
GRADE B - 51 TO 75	
GRADE C - 26 TO 50	
GRADE D - 10 TO 25	
GRADE E - <10	

Note: The Values given in the brackets denote the difference between the Pre and Post Test Scores.
(For Example: If the Pre-Test Grade is 'C' and the Post-Test Grade is 'A', then the progress is +2)

SCHOOL GRADE - BA

Status Gr. B (0) Performance Gr. A(+1)

OVERALL PERFORMANCE GRADES

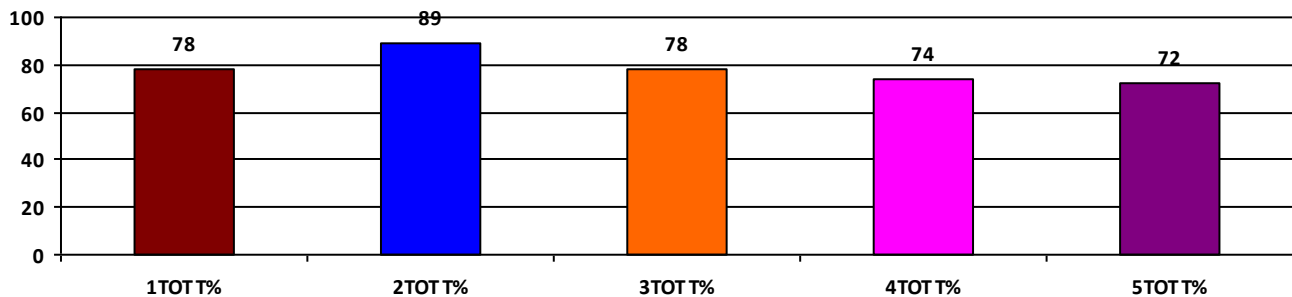
	Boys	Girls	Total
SCHOOL GR.	B	A	A
Diff. to Pre-Test	(0)	(+1)	(+1)
DIST. GR.	B	B	B
STATE GR.	B	B	B

CLASSWISE APPEARED

DETAILS	I STD	II STD	III STD	IV STD	V STD
BOYS	5	6	4	6	5
GIRLS	7	6	6	4	5
TOTAL	12	12	10	10	10
Diff. to Pre-Test	(+1)	(0)	(0)	(0)	(0)

CLASSWISE PERFORMANCE GRADES (% of marks)

DETAILS	I STD	II STD	III STD	IV STD	V STD
%	78	89	78	74	72
SCHOOL GR.	A	A	A	B	B
Diff. to Pre-Test	(0)	(+1)	(+1)	(0)	(0)
DIST. GR.	A	B	B	B	B
STATE GR.	A	B	B	B	B



GRADEWISE PERFORMANCE (NO. OF STUDENTS)

ENGLISH	1 Std	2 Std	3 Std	4 Std	5 Std	TAMIL	1 Std	2 Std	3 Std	4 Std	5 Std
GR. A	7	8	5	1	3	GR. A	10	12	8	8	8
GR. B	4	4	4	7	5	GR. B	1	0	2	2	1
GR. C	0	0	1	2	1	GR. C	1	0	0	0	0
GR. D	1	0	0	0	1	GR. D	0	0	0	0	1
GR. E	0	0	0	0	0	GR. E	0	0	0	0	0

DEAL POST TEST 2019-20 - SCHOOL REPORT CARD

PONDY
DIS Z4

34020304402 **GPS, KEEZHSATHAMANGALAM**

All Grades represent the following scorings in % *

GRADE A - >75	
GRADE B - 51 TO 75	* School Status Grade
GRADE C - 26 TO 50	represents the total
GRADE D - 10 TO 25	enrollment of the
GRADE E - <10	school (Not %)

Note: The Values given in the brackets denote the difference between the Pre and Post Test Scores.
(For Example: If the Pre-Test Grade is 'C' and the Post-Test Grade is 'A', then the progress is +2)

SCHOOL GRADE - CA

Status Gr. C (0) Performance Gr. A (0)

OVERALL PERFORMANCE GRADES

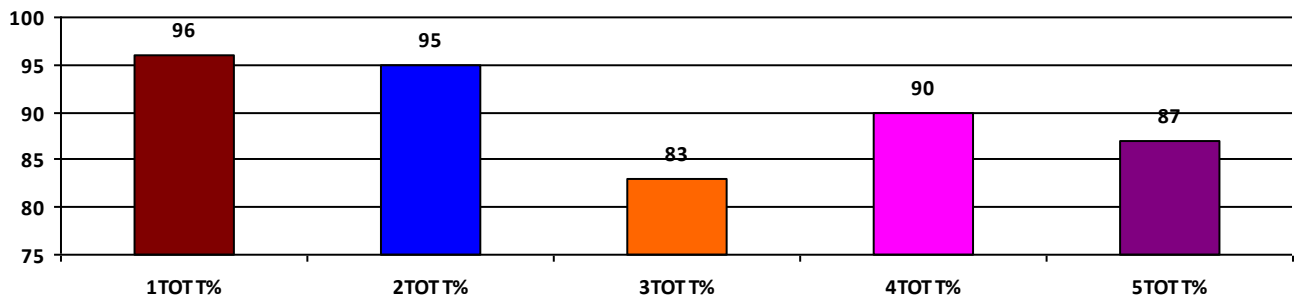
	Boys	Girls	Total
SCHOOL GR.	A	A	A
Diff. to Pre-Test	(0)	(0)	(0)
DIST. GR.	B	B	B
STATE GR.	B	B	B

CLASSWISE APPEARED

DETAILS	I STD	II STD	III STD	IV STD	V STD
BOYS	5	2	8	2	5
GIRLS	2	3	5	2	3
TOTAL	7	5	13	4	8
Diff. to Pre-Test	(0)	(0)	(+1)	(-1)	(0)

CLASSWISE PERFORMANCE GRADES (% of marks)

DETAILS	I STD	II STD	III STD	IV STD	V STD
%	96	95	83	90	87
SCHOOL GR.	A	A	A	A	A
Diff. to Pre-Test	(0)	(0)	(0)	(0)	(0)
DIST. GR.	A	B	B	B	B
STATE GR.	A	B	B	B	B



GRADEWISE PERFORMANCE (NO. OF STUDENTS)

ENGLISH	1 Std	2 Std	3 Std	4 Std	5 Std	TAMIL	1 Std	2 Std	3 Std	4 Std	5 Std
GR. A	7	5	8	4	7	GR. A	7	5	11	4	8
GR. B	0	0	4	0	1	GR. B	0	0	2	0	0
GR. C	0	0	1	0	0	GR. C	0	0	0	0	0
GR. D	0	0	0	0	0	GR. D	0	0	0	0	0
GR. E	0	0	0	0	0	GR. E	0	0	0	0	0

DEAL POST TEST 2019-20 - SCHOOL REPORT CARD

PONDY
DIS Z4

34020304403 GPS MELSATHAMANGALAM

All Grades represent the following scorings in % *

GRADE A - >75	
GRADE B - 51 TO 75	* School Status Grade
GRADE C - 26 TO 50	represents the total
GRADE D - 10 TO 25	enrollment of the
GRADE E - <10	school (Not %)

Note: The Values given in the brackets denote the difference between the Pre and Post Test Scores.
(For Example: If the Pre-Test Grade is 'C' and the Post-Test Grade is 'A', then the progress is +2)

SCHOOL GRADE - CB

Status Gr. C (0) Performance Gr. B (0)

OVERALL PERFORMANCE GRADES

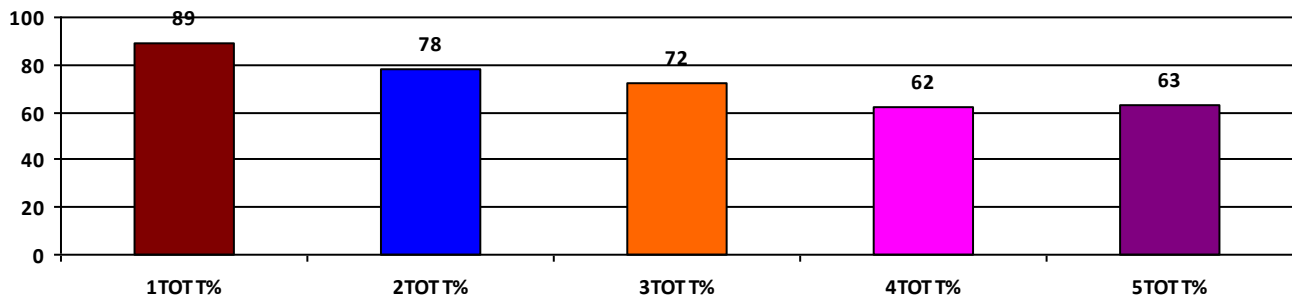
	Boys	Girls	Total
SCHOOL GR.	B	B	B
Diff. to Pre-Test	(0)	(0)	(0)
DIST. GR.	B	B	B
STATE GR.	B	B	B

CLASSWISE APPEARED

DETAILS	I STD	II STD	III STD	IV STD	V STD
BOYS	0	2	5	6	5
GIRLS	2	1	2	1	3
TOTAL	2	3	7	7	8
Diff. to Pre-Test	(-2)	(0)	(0)	(0)	(0)

CLASSWISE PERFORMANCE GRADES (% of marks)

DETAILS	I STD	II STD	III STD	IV STD	V STD
%	89	78	72	62	63
SCHOOL GR.	A	A	B	B	B
Diff. to Pre-Test	(0)	(+2)	(+1)	(0)	(0)
DIST. GR.	A	B	B	B	B
STATE GR.	A	B	B	B	B



GRADEWISE PERFORMANCE (NO. OF STUDENTS)

ENGLISH	1 Std	2 Std	3 Std	4 Std	5 Std	TAMIL	1 Std	2 Std	3 Std	4 Std	5 Std
GR. A	2	1	2	0	4	GR. A	2	3	6	3	4
GR. B	0	1	4	3	0	GR. B	0	0	1	4	3
GR. C	0	1	1	3	3	GR. C	0	0	0	0	0
GR. D	0	0	0	1	0	GR. D	0	0	0	0	0
GR. E	0	0	0	0	1	GR. E	0	0	0	0	1

DEAL POST TEST 2019-20 - SCHOOL REPORT CARD

PONDY
DIS Z4

34020304903 **GPS SULTHANPET**

All Grades represent the following scorings in % *

GRADE A - >75	* School Status Grade represents the total enrollment of the school (Not %)
GRADE B - 51 TO 75	
GRADE C - 26 TO 50	
GRADE D - 10 TO 25	
GRADE E - <10	

Note: The Values given in the brackets denote the difference between the Pre and Post Test Scores.
(For Example: If the Pre-Test Grade is 'C' and the Post-Test Grade is 'A', then the progress is +2)

SCHOOL GRADE - AB

Status Gr. A (0) Performance Gr. B (0)

OVERALL PERFORMANCE GRADES

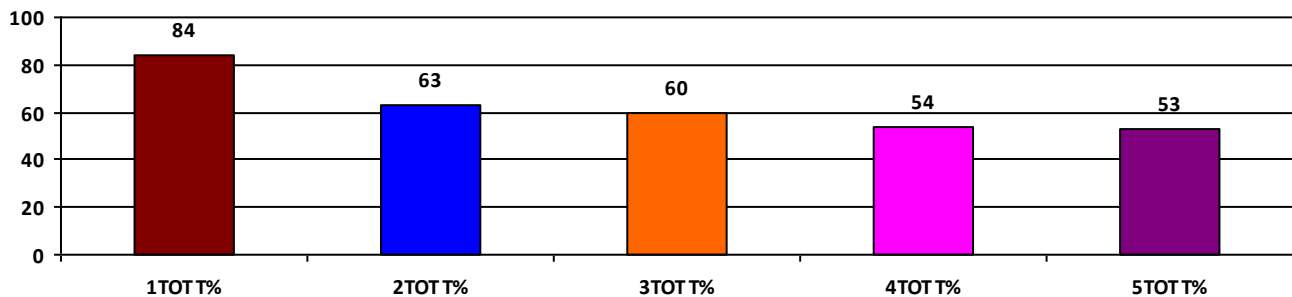
	Boys	Girls	Total
SCHOOL GR.	B	B	B
Diff. to Pre-Test	(0)	(0)	(0)
DIST. GR.	B	B	B
STATE GR.	B	B	B

CLASSWISE APPEARED

DETAILS	I STD	II STD	III STD	IV STD	V STD
BOYS	10	8	18	13	17
GIRLS	2	10	18	18	22
TOTAL	12	18	36	31	39
Diff. to Pre-Test	(-1)	(-1)	(+2)	(+3)	(+1)

CLASSWISE PERFORMANCE GRADES (% of marks)

DETAILS	I STD	II STD	III STD	IV STD	V STD
%	84	63	60	54	53
SCHOOL GR.	A	B	B	B	B
Diff. to Pre-Test	(+1)	(+1)	(0)	(0)	(+1)
DIST. GR.	A	B	B	B	B
STATE GR.	A	B	B	B	B



GRADEWISE PERFORMANCE (NO. OF STUDENTS)

ENGLISH	1 Std	2 Std	3 Std	4 Std	5 Std	TAMIL	1 Std	2 Std	3 Std	4 Std	5 Std
GR. A	7	2	11	3	13	GR. A	11	12	15	14	9
GR. B	4	5	12	10	6	GR. B	1	1	11	6	16
GR. C	1	7	6	12	11	GR. C	0	4	3	6	6
GR. D	0	3	4	2	7	GR. D	0	1	4	1	5
GR. E	0	1	3	4	2	GR. E	0	0	3	4	3

DEAL POST TEST 2019-20 - SCHOOL REPORT CARD

PONDY
DIS Z4

34020306201 **GPS VILLIANURPET**

All Grades represent the following scorings in % *

GRADE A - >75	* School Status Grade represents the total enrollment of the school (Not %)
GRADE B - 51 TO 75	
GRADE C - 26 TO 50	
GRADE D - 10 TO 25	
GRADE E - <10	

Note: The Values given in the brackets denote the difference between the Pre and Post Test Scores.
(For Example: If the Pre-Test Grade is 'C' and the Post-Test Grade is 'A', then the progress is +2)

SCHOOL GRADE - CA

Status Gr. C (0) Performance Gr. A(+1)

OVERALL PERFORMANCE GRADES

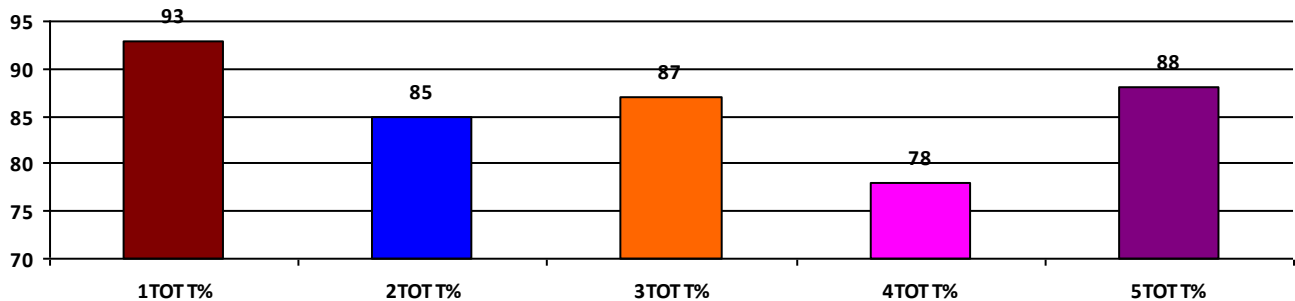
	Boys	Girls	Total
SCHOOL GR.	A	A	A
Diff. to Pre-Test	(+1)	(+1)	(+1)
DIST. GR.	B	B	B
STATE GR.	B	B	B

CLASSWISE APPEARED

DETAILS	I STD	II STD	III STD	IV STD	V STD
BOYS	3	2	7	4	5
GIRLS	1	5	2	2	1
TOTAL	4	7	9	6	6
Diff. to Pre-Test	(0)	(+1)	(0)	(0)	(0)

CLASSWISE PERFORMANCE GRADES (% of marks)

DETAILS	I STD	II STD	III STD	IV STD	V STD
%	93	85	87	78	88
SCHOOL GR.	A	A	A	A	A
Diff. to Pre-Test	(+2)	(0)	(+1)	(+1)	(+1)
DIST. GR.	A	B	B	B	B
STATE GR.	A	B	B	B	B



GRADEWISE PERFORMANCE (NO. OF STUDENTS)

ENGLISH	1 Std	2 Std	3 Std	4 Std	5 Std	TAMIL	1 Std	2 Std	3 Std	4 Std	5 Std
GR. A	4	4	8	4	5	GR. A	4	6	7	5	5
GR. B	0	3	0	1	0	GR. B	0	1	2	1	1
GR. C	0	0	1	1	1	GR. C	0	0	0	0	0
GR. D	0	0	0	0	0	GR. D	0	0	0	0	0
GR. E	0	0	0	0	0	GR. E	0	0	0	0	0

DEAL POST TEST 2019-20 - SCHOOL REPORT CARD

PONDY
DIS Z4

34020306214 **GPS, ARASUR**

All Grades represent the following scorings in % *

GRADE A - >75	* School Status Grade represents the total enrollment of the school (Not %)
GRADE B - 51 TO 75	
GRADE C - 26 TO 50	
GRADE D - 10 TO 25	
GRADE E - <10	

Note: The Values given in the brackets denote the difference between the Pre and Post Test Scores.
(For Example: If the Pre-Test Grade is 'C' and the Post-Test Grade is 'A', then the progress is +2)

SCHOOL GRADE - DB

Status Gr. D (0) Performance Gr. B (0)

OVERALL PERFORMANCE GRADES

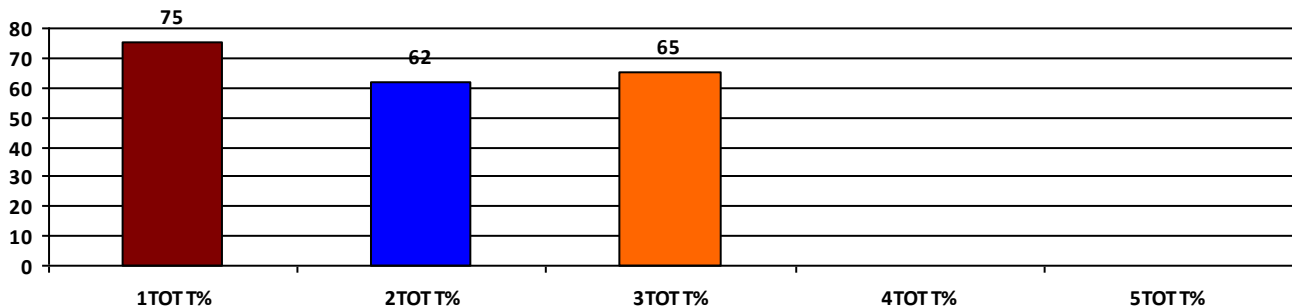
	Boys	Girls	Total
SCHOOL GR.	B	A	B
Diff. to Pre-Test	(0)	(+1)	(0)
DIST. GR.	B	B	B
STATE GR.	B	B	B

CLASSWISE APPEARED

DETAILS	I STD	II STD	III STD	IV STD	V STD
BOYS	2	5	1	0	0
GIRLS	8	4	1	0	0
TOTAL	10	9	2	0	0
Diff. to Pre-Test	(0)	(0)	(0)	(0)	(0)

CLASSWISE PERFORMANCE GRADES (% of marks)

DETAILS	I STD	II STD	III STD	IV STD	V STD
%	75	62	65	NA	NA
SCHOOL GR.	B	B	B	NA	NA
Diff. to Pre-Test	(0)	(-1)	(-1)	(+8)	(+8)
DIST. GR.	A	B	B	B	B
STATE GR.	A	B	B	B	B



GRADEWISE PERFORMANCE (NO. OF STUDENTS)

ENGLISH	1 Std	2 Std	3 Std	4 Std	5 Std	TAMIL	1 Std	2 Std	3 Std	4 Std	5 Std
GR. A	5	0	0	0	0	GR. A	5	7	1	0	0
GR. B	4	5	1	0	0	GR. B	4	0	1	0	0
GR. C	0	3	1	0	0	GR. C	1	0	0	0	0
GR. D	1	1	0	0	0	GR. D	0	2	0	0	0
GR. E	0	0	0	0	0	GR. E	0	0	0	0	0

DEAL POST TEST 2019-20 - SCHOOL REPORT CARD

PONDY
DIS Z4

34020306215 **GPS, ARIYAPALAYAM**

All Grades represent the following scorings in % *

GRADE A - >75	* School Status Grade represents the total enrollment of the school (Not %)
GRADE B - 51 TO 75	
GRADE C - 26 TO 50	
GRADE D - 10 TO 25	
GRADE E - <10	

Note: The Values given in the brackets denote the difference between the Pre and Post Test Scores.
(For Example: If the Pre-Test Grade is 'C' and the Post-Test Grade is 'A', then the progress is +2)

SCHOOL GRADE - BA

Status Gr. B (0) Performance Gr. A(+1)

OVERALL PERFORMANCE GRADES

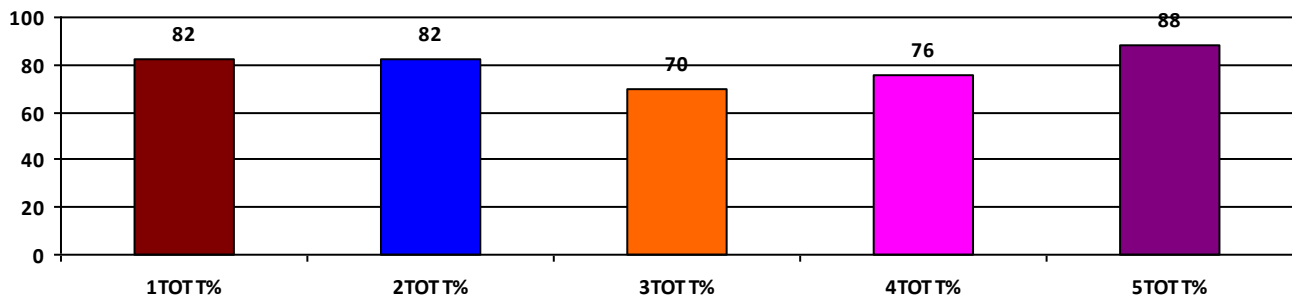
	Boys	Girls	Total
SCHOOL GR.	A	A	A
Diff. to Pre-Test	(+1)	(+1)	(+1)
DIST. GR.	B	B	B
STATE GR.	B	B	B

CLASSWISE APPEARED

DETAILS	I STD	II STD	III STD	IV STD	V STD
BOYS	7	3	6	4	4
GIRLS	4	3	8	8	5
TOTAL	11	6	14	12	9
Diff. to Pre-Test	(+1)	(0)	(+1)	(+1)	(0)

CLASSWISE PERFORMANCE GRADES (% of marks)

DETAILS	I STD	II STD	III STD	IV STD	V STD
%	82	82	70	76	88
SCHOOL GR.	A	A	B	A	A
Diff. to Pre-Test	(+1)	(0)	(0)	(+1)	(+1)
DIST. GR.	A	B	B	B	B
STATE GR.	A	B	B	B	B



GRADEWISE PERFORMANCE (NO. OF STUDENTS)

ENGLISH	1 Std	2 Std	3 Std	4 Std	5 Std	TAMIL	1 Std	2 Std	3 Std	4 Std	5 Std
GR. A	6	3	6	11	8	GR. A	7	5	5	3	8
GR. B	3	2	8	1	1	GR. B	4	1	5	8	1
GR. C	2	1	0	0	0	GR. C	0	0	3	1	0
GR. D	0	0	0	0	0	GR. D	0	0	1	0	0
GR. E	0	0	0	0	0	GR. E	0	0	0	0	0

DEAL POST TEST 2019-20 - SCHOOL REPORT CARD

PONDY
DIS Z4

34020306216 **GPS, GOPALANKADAI**

All Grades represent the following scorings in % *

GRADE A - >75	
GRADE B - 51 TO 75	* School Status Grade
GRADE C - 26 TO 50	represents the total
GRADE D - 10 TO 25	enrollment of the
GRADE E - <10	school (Not %)

Note: The Values given in the brackets denote the difference between the Pre and Post Test Scores.
(For Example: If the Pre-Test Grade is 'C' and the Post-Test Grade is 'A', then the progress is +2)

SCHOOL GRADE - DA

Status Gr. D (0) Performance Gr. A(+1)

OVERALL PERFORMANCE GRADES

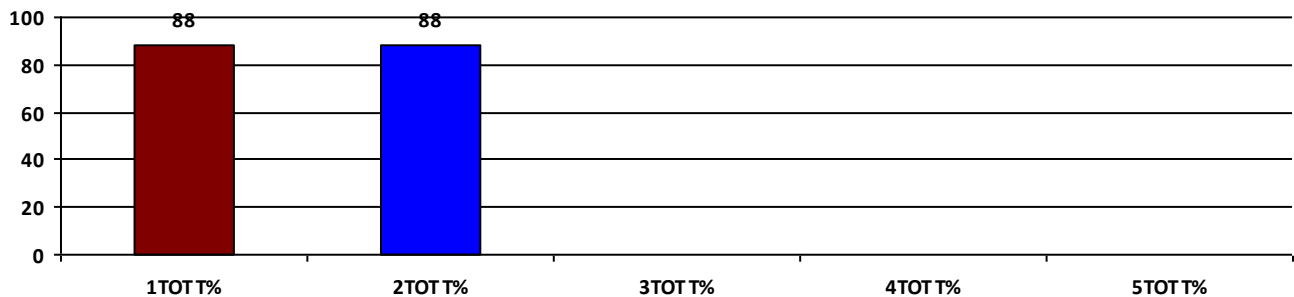
	Boys	Girls	Total
SCHOOL GR.	A	A	A
Diff. to Pre-Test	(+1)	(+1)	(+1)
DIST. GR.	B	B	B
STATE GR.	B	B	B

CLASSWISE APPEARED

DETAILS	I STD	II STD	III STD	IV STD	V STD
BOYS	7	2	0	0	0
GIRLS	2	5	0	0	0
TOTAL	9	7	0	0	0
Diff. to Pre-Test	(-1)	(-1)	(0)	(0)	(0)

CLASSWISE PERFORMANCE GRADES (% of marks)

DETAILS	I STD	II STD	III STD	IV STD	V STD
%	88	88	NA	NA	NA
SCHOOL GR.	A	A	NA	NA	NA
Diff. to Pre-Test	(+1)	(+1)	(+8)	(+8)	(+8)
DIST. GR.	A	B	B	B	B
STATE GR.	A	B	B	B	B



GRADEWISE PERFORMANCE (NO. OF STUDENTS)

ENGLISH	1 Std	2 Std	3 Std	4 Std	5 Std	TAMIL	1 Std	2 Std	3 Std	4 Std	5 Std
GR. A	8	5	0	0	0	GR. A	8	6	0	0	0
GR. B	0	2	0	0	0	GR. B	0	1	0	0	0
GR. C	1	0	0	0	0	GR. C	1	0	0	0	0
GR. D	0	0	0	0	0	GR. D	0	0	0	0	0
GR. E	0	0	0	0	0	GR. E	0	0	0	0	0

DEAL POST TEST 2019-20 - SCHOOL REPORT CARD

PONDY
DIS Z4

34020306220 **GPS UTHIRAVAGNIPET**

All Grades represent the following scorings in % *

GRADE A - >75	* School Status Grade represents the total enrollment of the school (Not %)
GRADE B - 51 TO 75	
GRADE C - 26 TO 50	
GRADE D - 10 TO 25	
GRADE E - <10	

Note: The Values given in the brackets denote the difference between the Pre and Post Test Scores.
(For Example: If the Pre-Test Grade is 'C' and the Post-Test Grade is 'A', then the progress is +2)

SCHOOL GRADE - DA

Status Gr. D (0) Performance Gr. A(+1)

OVERALL PERFORMANCE GRADES

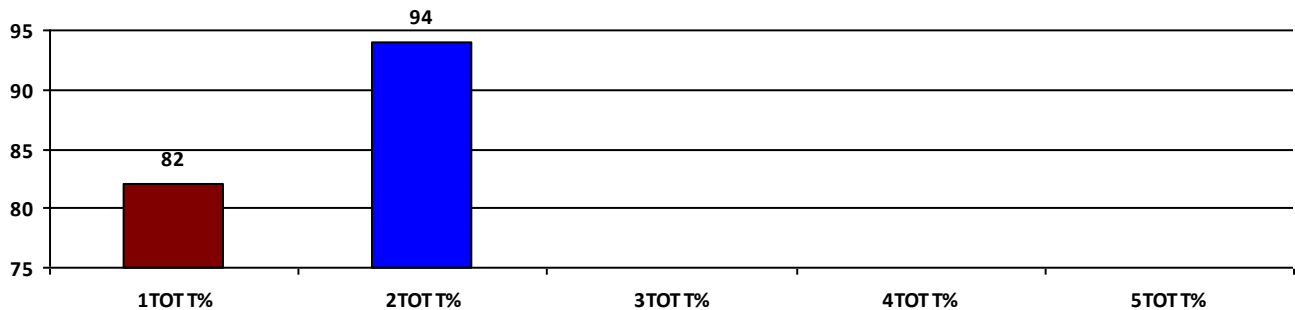
	Boys	Girls	Total
SCHOOL GR.	A	A	A
Diff. to Pre-Test	(+1)	(+1)	(+1)
DIST. GR.	B	B	B
STATE GR.	B	B	B

CLASSWISE APPEARED

DETAILS	I STD	II STD	III STD	IV STD	V STD
BOYS	4	2	0	0	0
GIRLS	3	2	0	0	0
TOTAL	7	4	0	0	0
Diff. to Pre-Test	(0)	(0)	(0)	(0)	(0)

CLASSWISE PERFORMANCE GRADES (% of marks)

DETAILS	I STD	II STD	III STD	IV STD	V STD
%	82	94	NA	NA	NA
SCHOOL GR.	A	A	NA	NA	NA
Diff. to Pre-Test	(+1)	(+2)	(+8)	(+8)	(+8)
DIST. GR.	A	B	B	B	B
STATE GR.	A	B	B	B	B



GRADEWISE PERFORMANCE (NO. OF STUDENTS)

ENGLISH	1 Std	2 Std	3 Std	4 Std	5 Std	TAMIL	1 Std	2 Std	3 Std	4 Std	5 Std
GR. A	4	4	0	0	0	GR. A	7	4	0	0	0
GR. B	3	0	0	0	0	GR. B	0	0	0	0	0
GR. C	0	0	0	0	0	GR. C	0	0	0	0	0
GR. D	0	0	0	0	0	GR. D	0	0	0	0	0
GR. E	0	0	0	0	0	GR. E	0	0	0	0	0

DEAL POST TEST 2019-20 - SCHOOL REPORT CARD

PONDY
DIS Z4

34020306401 **GPS THIRUKANCHI**

All Grades represent the following scorings in % *

GRADE A - >75	
GRADE B - 51 TO 75	* School Status Grade
GRADE C - 26 TO 50	represents the total
GRADE D - 10 TO 25	enrollment of the
GRADE E - <10	school (Not %)

Note: The Values given in the brackets denote the difference between the Pre and Post Test Scores.
(For Example: If the Pre-Test Grade is 'C' and the Post-Test Grade is 'A', then the progress is +2)

SCHOOL GRADE - CA

Status Gr. C (0) Performance Gr. A(+1)

OVERALL PERFORMANCE GRADES

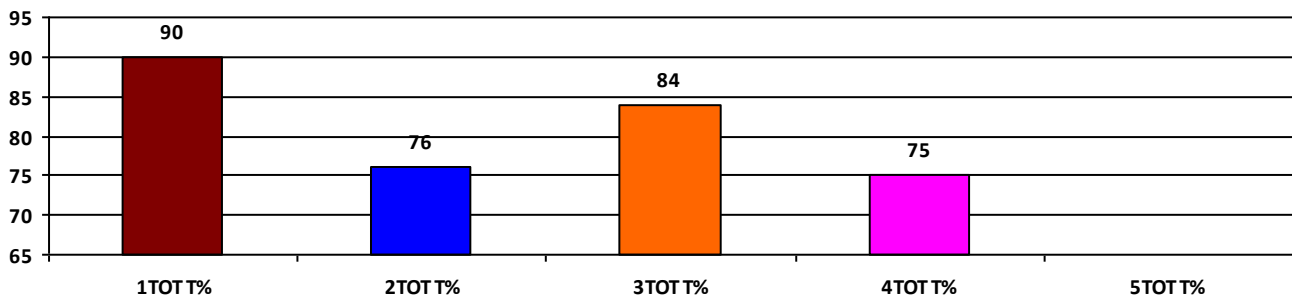
	Boys	Girls	Total
SCHOOL GR.	A	A	A
Diff. to Pre-Test	(+1)	(+1)	(+1)
DIST. GR.	B	B	B
STATE GR.	B	B	B

CLASSWISE APPEARED

DETAILS	I STD	II STD	III STD	IV STD	V STD
BOYS	8	4	8	4	0
GIRLS	4	6	5	4	0
TOTAL	12	10	13	8	0
Diff. to Pre-Test	(-3)	(+1)	(+1)	(0)	(0)

CLASSWISE PERFORMANCE GRADES (% of marks)

DETAILS	I STD	II STD	III STD	IV STD	V STD
%	90	76	84	75	NA
SCHOOL GR.	A	A	A	B	NA
Diff. to Pre-Test	(+1)	(+1)	(+2)	(0)	(+8)
DIST. GR.	A	B	B	B	B
STATE GR.	A	B	B	B	B



GRADEWISE PERFORMANCE (NO. OF STUDENTS)

ENGLISH	1 Std	2 Std	3 Std	4 Std	5 Std	TAMIL	1 Std	2 Std	3 Std	4 Std	5 Std
GR. A	12	4	11	4	0	GR. A	12	8	12	6	0
GR. B	0	5	2	3	0	GR. B	0	1	1	0	0
GR. C	0	0	0	1	0	GR. C	0	0	0	2	0
GR. D	0	0	0	0	0	GR. D	0	1	0	0	0
GR. E	0	1	0	0	0	GR. E	0	0	0	0	0

DEAL POST TEST 2019-20 - SCHOOL REPORT CARD

PONDY
DIS Z4

34020306403 GPS NARIMEDU

All Grades represent the following scorings in % *

GRADE A - >75	* School Status Grade represents the total enrollment of the school (Not %)
GRADE B - 51 TO 75	
GRADE C - 26 TO 50	
GRADE D - 10 TO 25	
GRADE E - <10	

Note: The Values given in the brackets denote the difference between the Pre and Post Test Scores.
(For Example: If the Pre-Test Grade is 'C' and the Post-Test Grade is 'A', then the progress is +2)

SCHOOL GRADE - DA

Status Gr. D (0) Performance Gr. A (0)

OVERALL PERFORMANCE GRADES

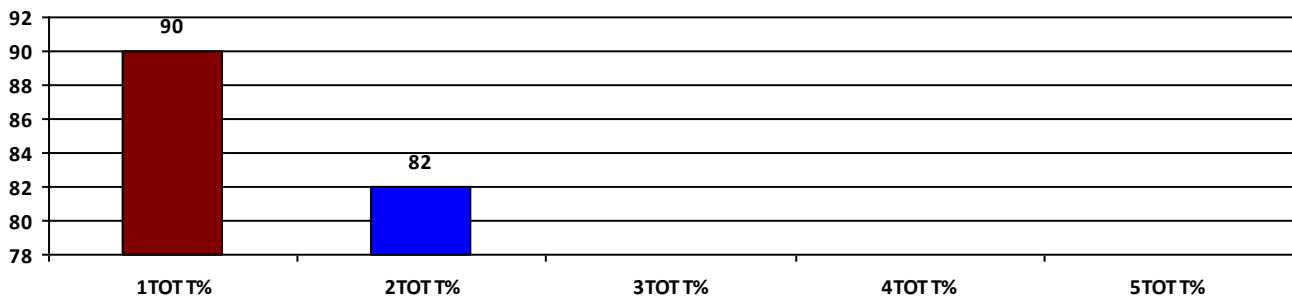
	Boys	Girls	Total
SCHOOL GR.	A	A	A
Diff. to Pre-Test	(0)	(0)	(0)
DIST. GR.	B	B	B
STATE GR.	B	B	B

CLASSWISE APPEARED

DETAILS	I STD	II STD	III STD	IV STD	V STD
BOYS	6	3	0	0	0
GIRLS	1	3	0	0	0
TOTAL	7	6	0	0	0
Diff. to Pre-Test	(+1)	(+1)	(0)	(0)	(0)

CLASSWISE PERFORMANCE GRADES (% of marks)

DETAILS	I STD	II STD	III STD	IV STD	V STD
%	90	82	NA	NA	NA
SCHOOL GR.	A	A	NA	NA	NA
Diff. to Pre-Test	(0)	(0)	(+8)	(+8)	(+8)
DIST. GR.	A	B	B	B	B
STATE GR.	A	B	B	B	B



GRADEWISE PERFORMANCE (NO. OF STUDENTS)

ENGLISH	1 Std	2 Std	3 Std	4 Std	5 Std	TAMIL	1 Std	2 Std	3 Std	4 Std	5 Std
GR. A	7	4	0	0	0	GR. A	7	4	0	0	0
GR. B	0	1	0	0	0	GR. B	0	1	0	0	0
GR. C	0	1	0	0	0	GR. C	0	1	0	0	0
GR. D	0	0	0	0	0	GR. D	0	0	0	0	0
GR. E	0	0	0	0	0	GR. E	0	0	0	0	0